

## **Platform Keelbos**

**Dorpstraat 16**

**6361 EL NUTH**

**K.V.K. nr: 140 77 656**

**Bank: NL94 RABO 0154 889 806**

**Telefoon: 06 305 77 030**

**E-mail: [platform.keelbos@gmail.com](mailto:platform.keelbos@gmail.com)**

**[www.platform-keelbos.org](http://www.platform-keelbos.org)**

**Hét kennis expertise centrum van de HOP**

**Nuth**, 30 november 2023

**Aan** het College van gedeputeerde Staten van de Provincie Drenthe  
in afschrift aan de Statenleden  
Westerbrink 1,  
9405 BJ Assen

**Betreft:** ontbossing Grote Moere  
ivm vh Boswet 1961 en Wet Natuurbescherming 2015  
en gedegradeerd bos

**Referentie:** Satellietdataportaal.nl

Geachte mevrouw/meneer,

De strekking en bedoeling van zowel de Boswet 1961 als van de Wet Natuurbescherming 2015 is het uitbreiden en ten minste in standhouden van het bosareaal van Nederland. Met name bomen en ook struiken zijn zeer voordelig en duurzaam in de stikstofopname en -opslag in hun hout.

Staatsbosbeheer te Amersfoort heeft, als terreineigenaar Grote Moere, Hondsrug de Moere, hoek Oostereind/Tienmaatsweg te Grolloo (gem. Aa en Hunze), <sup>1)</sup>, <sup>2)</sup> een groot aantal bomen/struiken geroid uit het bos zonder herplant en/of voldoende natuurlijke verjonging <sup>3)</sup>, zodat van ravage en kaalslag kan worden gesproken. Niet in te zien valt wat dit met bos- of natuurbescherming, tegen ontbossing, van doen heeft. Van het tegendeel is hier sprake, namelijk ontbossing door middel van verwijdering van bomen/struiken. In het Nature-artikel dd. 13-11-2023 "Integrated global assessment of the natural forest carbon potential" spreekt hoogleraar Europees bos aan de Wageningen universiteit Gert-Jan Nabuurs, co-auteur, van een gedegradeerd bos. <sup>5)</sup><sup>4)</sup>

Daarom ons verzoek aan U om handhavend op te treden, ingevolge vh de Boswet 1961 en de Wet Natuurbescherming 2015 en Staatsbosbeheer een aanwijzing tot herplant, ter plaatse, te geven en te verplichten. Dit ter compensatie van de gepleegde rooi - en ontbossingsactiviteiten.

In afwachting van Uw berichten,

hoogachtend,  
Johannes C. Scheffer Emmelkamp (Hans)  
gevolmachtigd bestuurslid van  
Stichting Platform Keelbos te Nuth (Lb)

bijlagen: 1) satellietdataportaal.nl 2018 september/oktober

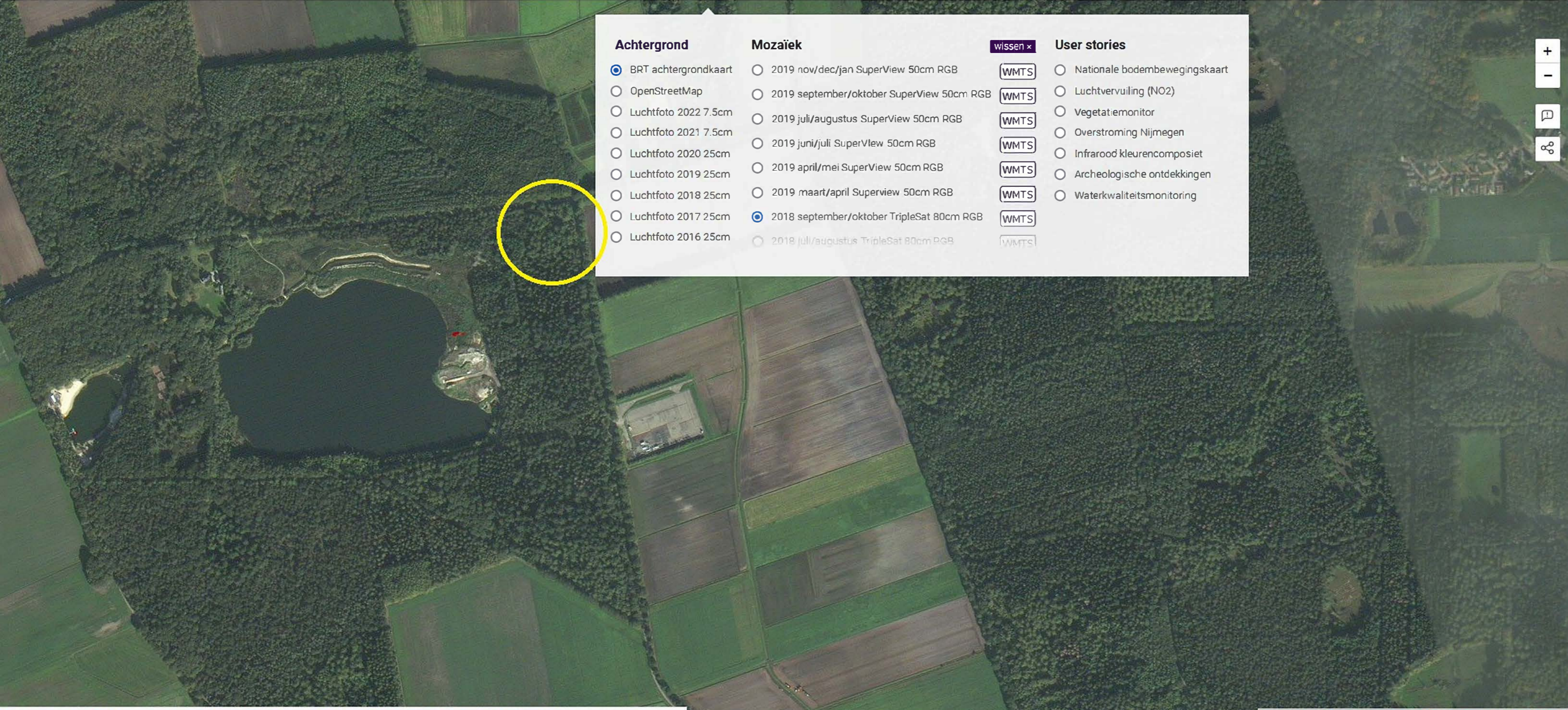
2) satellietdataportaal.nl 2019 maart/april, kaalslag, ravage, ontbossing

3) satellietdataportaal.nl 2023 september/oktober, geen spoor van natuurlijke verjonging

4) Nieuws & Co 13 november 2023, interview met Gert-Jan Nabuurs

5) Nature dd. 13-11-2023 "Integrated global assessment of the natural forest carbon potential"

link: <https://www.nature.com/articles/s41586-023-06723-z>



**Achtergrond**

- BRT achtergrondkaart
- OpenStreetMap
- Luchtfoto 2022 7.5cm
- Luchtfoto 2021 7.5cm
- Luchtfoto 2020 25cm
- Luchtfoto 2019 25cm
- Luchtfoto 2018 25cm
- Luchtfoto 2017 25cm
- Luchtfoto 2016 25cm

**Mozaïek**

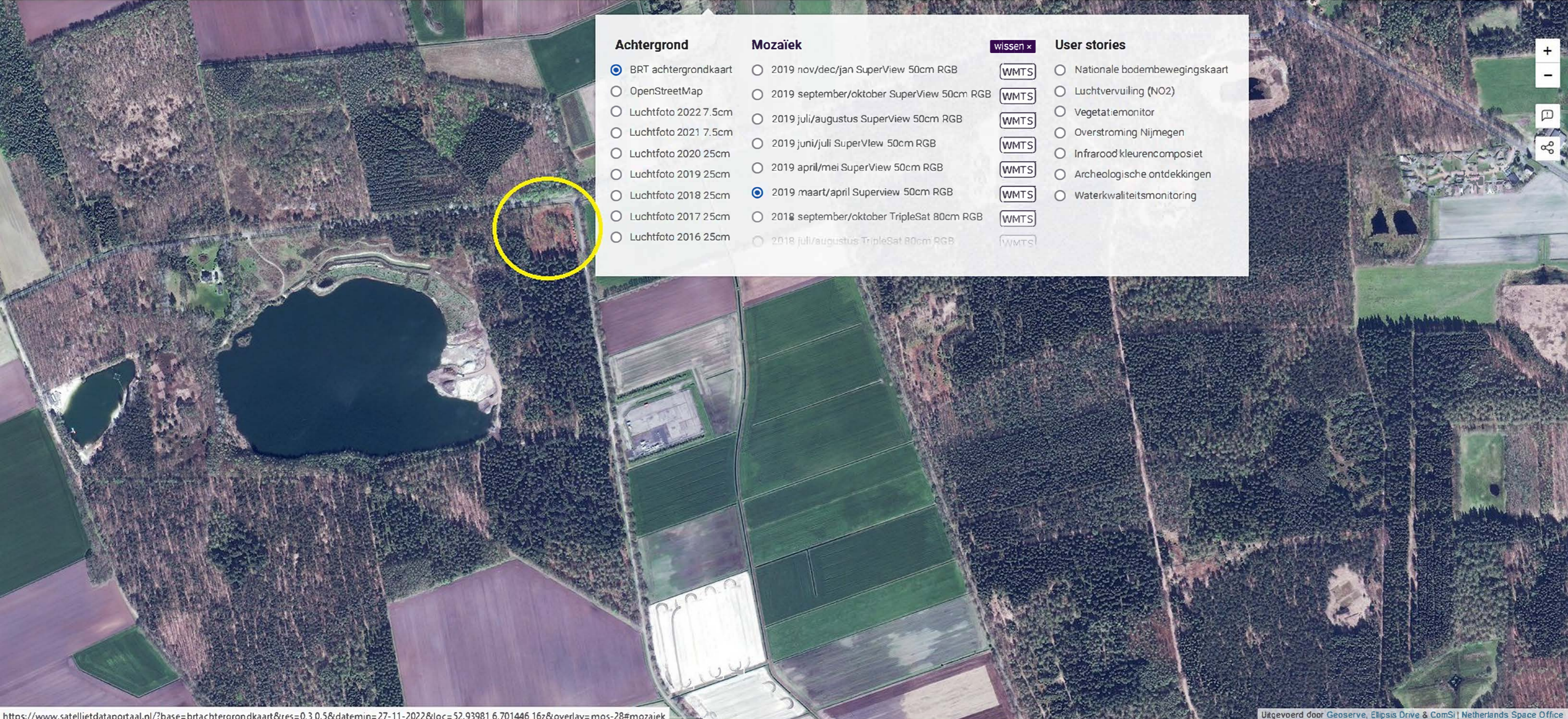
- 2019 nov/dec/jan SuperView 50cm RGB
- 2019 september/oktober SuperView 50cm RGB
- 2019 juli/augustus SuperView 50cm RGB
- 2019 juni/juli SuperView 50cm RGB
- 2019 april/mei SuperView 50cm RGB
- 2019 maart/april Superview 50cm RGB
- 2018 september/oktober TripleSat 80cm RGB
- 2018 juli/augustus TripleSat 80cm RGB

**Wissen x**

- WMTS
- WMTS
- WMTS
- WMTS
- WMTS
- WMTS
- WMTS
- WMTS

**User stories**

- Nationale bodembewegingskaart
- Luchtvervuiling (NO2)
- Vegetatiemonitor
- Overstroming Nijmegen
- Infrarood kleurencomposiet
- Archeologische ontdekkingen
- Waterkwaliteitsmonitoring



**Achtergrond**

- BRT achtergrondkaart
- OpenStreetMap
- Luchtfoto 2022 7.5cm
- Luchtfoto 2021 7.5cm
- Luchtfoto 2020 25cm
- Luchtfoto 2019 25cm
- Luchtfoto 2018 25cm
- Luchtfoto 2017 25cm
- Luchtfoto 2016 25cm

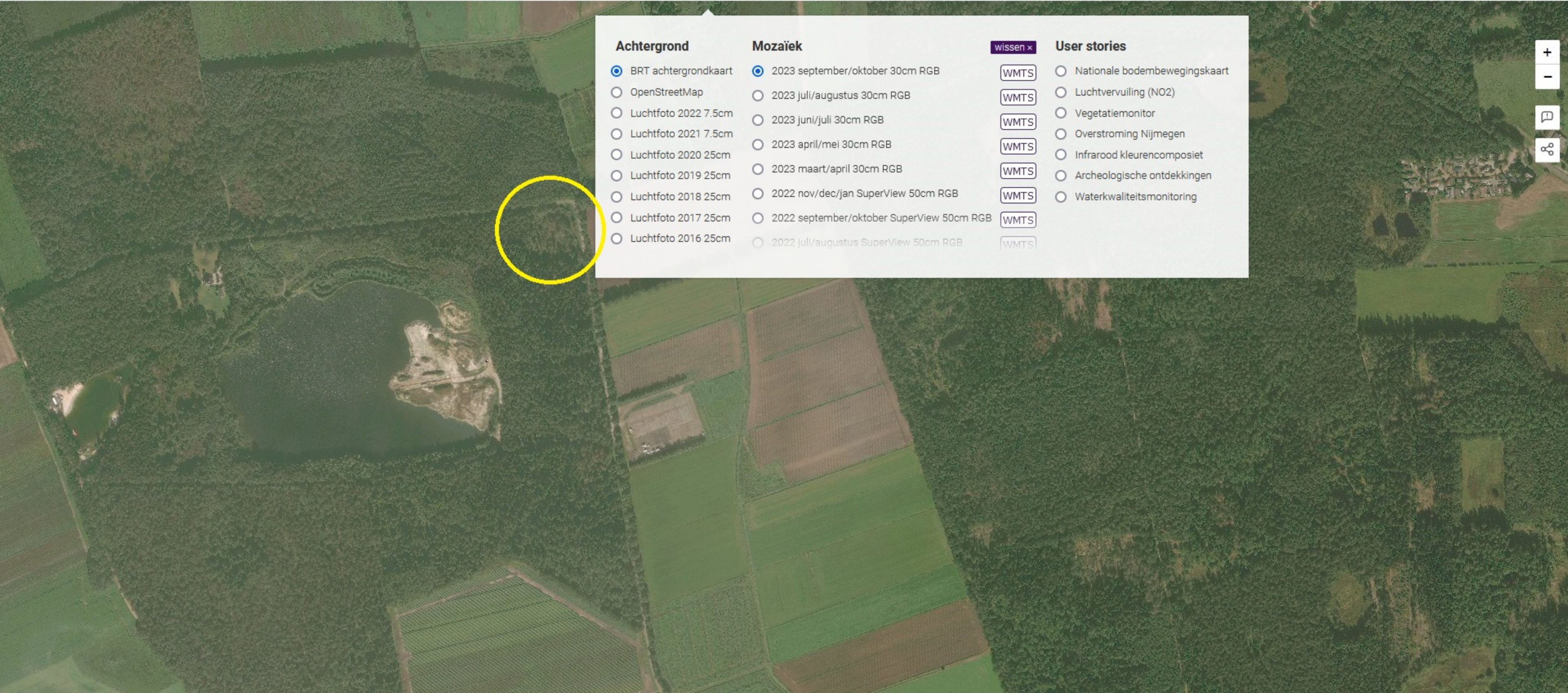
**Mozaïek**

- 2019 nov/dec/jan SuperView 50cm RGB
- 2019 september/oktober SuperView 50cm RGB
- 2019 juli/augustus SuperView 50cm RGB
- 2019 juni/juli SuperView 50cm RGB
- 2019 april/mei SuperView 50cm RGB
- 2019 maart/april Superview 50cm RGB
- 2018 september/oktober TripleSat 80cm RGB
- 2018 juli/augustus TripleSat 80cm RGB

**wissen x**

- Nationale bodembewegingskaart
- Luchtvervuiling (NO2)
- Vegetat:emonitor
- Overstroming Nijmegen
- Infrarood kleurencomposiet
- Archeologische ontdekkingen
- Waterkwaliteitsmonitoring

**User stories**



### Achtergrond

- BRT achtergrondkaart
- OpenStreetMap
- Luchtfoto 2022 7.5cm
- Luchtfoto 2021 7.5cm
- Luchtfoto 2020 25cm
- Luchtfoto 2019 25cm
- Luchtfoto 2018 25cm
- Luchtfoto 2017 25cm
- Luchtfoto 2016 25cm

### Mozaïek

- 2023 september/oktober 30cm RGB
- 2023 juli/augustus 30cm RGB
- 2023 juni/juli 30cm RGB
- 2023 april/mei 30cm RGB
- 2023 maart/april 30cm RGB
- 2022 nov/dec/jan SuperView 50cm RGB
- 2022 september/oktober SuperView 50cm RGB
- 2022 juli/augustus SuperView 50cm RGB

wissen x

- WMTS
- WMTS
- WMTS
- WMTS
- WMTS
- WMTS
- WMTS

### User stories

- Nationale bodembewegingskaart
- Luchtvervuiling (NO2)
- Vegetatiemonitor
- Overstroming Nijmegen
- Infrarood kleurencomposiet
- Archeologische ontdekkingen
- Waterkwaliteitsmonitoring

+  
-  
[Comment icon]  
[Share icon]

Nieuws en Co, Radio 1, maandag 13 november 2023 17:00 tot 18:30 uur, na 42:10 m t/m 49:23 m

<https://www.nporadio1.nl/uitzendingen/nieuws-en-co/94132d3c-e610-4985-bfce-1bcd243aa9af/2023-11-13-nieuws-en-co>

Interview met Gert-Jan Nabuurs coauteur van het Nature-artikel “Integrated global assessment of the natural forest carbon potential” van 13-11-2023:

Fleur Wallenburg: Bossen kunnen wereldwijd nog honderden miljarden tonnen extra CO<sub>2</sub> opnemen. Ruim twintig jaar aan menselijke CO<sub>2</sub> uitstoot, kan op deze manier worden gecompenseerd. Maar dan moeten die bossen wel veel beter worden beschermd. Blijkt uit een onderzoek, gepubliceerd in het wetenschappelijke tijdschrift “Nature”. Gert-Jan Nabuurs is hoogleraar Europees bos aan de Wageningen universiteit en heeft meegewerkt aan dit onderzoek. Goedemiddag

Gert-Jan Nabuurs: Goedemiddag

Fleur Wallenburg: Klinkt wel als goed nieuws, wat ook wel eens fijn is, als het gaat om het klimaat. Ziet U dat ook zo?

Gert-Jan Nabuurs: Ja, dit is, dit is zeker goed nieuws. Wij hebben natuurlijk met nieuwe methodes ... deze schatting gemaakt van wat je aan extra CO<sub>2</sub> kan vastleggen en dit getal is nog steeds heel hoopgevend. Ja

Fleur Wallenburg: Ja, want ruim twintig jaar dus aan menselijke CO<sub>2</sub> uitstoot ... er is flink wat winst te behalen als we die bossen beter beschermen. Kunt U uitleggen, hoe dat dan werkt?

Gert-Jan Nabuurs: Een bos bevat heel veel koolstof, dus CO<sub>2</sub> wordt uit de lucht opgenomen in het groene blad en dat wordt vastgelegd als hout in het bos. Dus op het moment als je bossen niet **duurzaam beheert** en je bos omzet dus verliest in een ontbossing, dan verlies je ook die CO<sub>2</sub> weer. Dus je wil .... De studie laat ook zien dat je een hele breed scala aan maatregelen kunt nemen. Je moet, en het bestaande bos goed beschermen. Maar ook **het bestaande bos is heel vaak gedegradeerd**, noemen we dat. Dus er zit veel minder CO<sub>2</sub> in dan wat je zou kunnen vastleggen. En je kunt ook een stukje nieuw bos aanleggen in de wereld. En al die maatregelen samen die leiden tot .... die kunnen leiden tot een grote extra CO<sub>2</sub> vastlegging.

Fleur Wallenburg: Hoeveel extra?

Gert-Jan Nabuurs: Ja, er komt dan een getal... tweehonderd zesentwintig miljard ton koolstof.. in de vorm van echt koolstof. En dat is ongeveer.... als je het vergelijkt met de huidige menselijke uitstoot door het verbranden van fossiele brandstoffen... dat ongeveer tien miljard ton koolstof... dus dan heb je het over tweëntwintig jaar aan menselijke uitstoot.

Fleur Wallenburg: Nou, dat is heel fijn. Dan kunnen wij gewoon twintig jaar later beginnen met al die klimaatregelen?

Gert-Jan Nabuurs: Nou, dat is ook heel duidelijk waarvoor wij waarschuwen. Natuurlijk heb je dat extra bos en dat betere bosbeheer en beter houtgebruik... dat heb je niet zomaar voor elkaar. Dat gaat ook lang duren. Dus je kunt elk jaar ook maar een deel van je uitstoot compenseren. En waar we zeker ook willen waarschuwen... Het gaat er niet om dat je niets meer zou hoeven doen aan de CO<sub>2</sub> uitstoot. Je moet zeker ook de CO<sub>2</sub>-uitstoot weten te verminderen en daarnaast een goed bosbeheer kan ook leiden tot extra CO<sub>2</sub> vastlegging. Bosbeheer .....

Fleur Wallenburg: Ja. Daar wil wat over vragen, want U zei al.. van sommige bossen.. ja daar maken wij dan niet optimaal gebruik van, als het gaat om de compensatie?

Gert-Jan Nabuurs: Ja. Er is heel veel bos in de wereld wat we **gedegradeerd bos** noemen. Dat zijn bossen die je.... voorbeeld ook in Midden-Europa heeft... zijn heel veel fijnsparbossen die hebben

veel last van een kever, die daarin komt omdat het heet en droog is geweest. Die bossen sterven af. Dus je kunt ook die bossen opnieuw herstellen.... We hebben het vaak over de Natuurherstelwet in Europa. Maar je kunt die bossen ook herstellen door andere boomsoorten te planten die beter aangepast zijn aan de klimaatveranderingen en beter bosbeheer... daarop te beheren.... En op die manier eigenlijk bossen behouden en herstellen die veel meer CO<sub>2</sub> ~~hebben~~, vasthouden dan een bos dat daar stond.

Fleur Wallenburg: Ja. U had er erover van bossen aan elkaar verbinden... Dan moet je natuurlijk wel gaan extra bomen gaan planten, toch?

Gert-Jan Nabuurs: Ja, ook dat hoort erbij. Het gaat inderdaad ook om bomen planten.. We hebben natuurlijk bijvoorbeeld in Europa, kleine stukjes bos, waar invloeden van buitenaf ertoe leiden dat bos eigenlijk niet heel gezond is. Door is bossen aan elkaar te verbinden, door nieuwe boscorridors aan te leggen, kun je dat bos ook sterker maken. Maakt je het ook mogelijk dat soorten ook onder klimaatveranderingen daar... ook iets kunnen opschuiven bijvoorbeeld naar het noorden.

Fleur Wallenburg: Ja, in het onderzoek gaat het ook over lang die bossen moeten blijven staan om dan optimaal gebruik van te maken. Dan gaat het wel echt over tientallen jaren, toch?

Gert-Jan Nabuurs: Ja, dan hebben wij het inderdaad over tientallen jaren. Een gemiddeld Europees bos is.... Dan heb je al heel gauw over negentig tot honderd jaar en sommige bostypes zelfs nog langer. Dus goed bosbeheer is inderdaad een kwestie van de lange termijn. En op de lange termijn zorgen dat je dat bos **duurzaam beheert**. **Duurzaam beheer** kan ook zijn, dat je daar ook op een goede manier hout uit oogst om bijvoorbeeld houten huizen te bouwen. En juist die hele cyclus die.... wij noemen dat hernieuwbare grondstoffen, die je dan hebt, die heb je ook heel hard nodig om fossiele grondstoffen te vervangen. En op die manier heb je dus een gezond en goed bos en je zorgt voor hernieuwbare grondstoffen

Fleur Wallenburg: Ja, dat staat nu allemaal op papier en dan denk ik: tja, en nu? Dat moet natuurlijk uitgevoerd gaan worden?

Gert-Jan Nabuurs: Ja, dat moet inderdaad uitgevoerd gaan worden en de EU is natuurlijk onder andere daarmee bezig.. En zijn natuurlijk... processen in gang gezet om ontbossing in de wereld te stoppen. Brazilië maakt goede stappen vooruit, maar straks in november, of eind november is de grote klimaatconferentie. En dan zullen landen ook een vervolgstap moeten zetten. En dat is.... Als je ziet wat de afgelopen jaren uit de klimaatconferenties is gekomen, dat is betreurenswaardig weinig. Dus ik heb hier ook niet al te veel hoop op deze klimaatconferentie, maar wat je wel ziet, is dat je wel binnen de regio's in de landen de EU, ook in samenwerking met de ontwikkelingslanden of de Verenigde Staten, Canada... dat op dat regionale niveau gebeurt er wel heel veel en worden er goede stappen gezet.

Fleur Wallenburg: Ja, ik wil net zeggen, we begonnen vrij optimistisch maar als ik nu zo U hoor?

Gert-Jan Nabuurs: Ja, ook binnen Nederland... Kijk, Nederland is natuurlijk een heel klein grondoppervlak.... Maar ook met onze Wageningse groep hebben we ook gewerkt aan bos- en klimaatpilots om het bos te verbeteren en te versterken onder klimaatverandering. Nederland heeft ook een bossenstrategie, daarin wordt gestreefd naar zevenendertig duizend hectare extra bos. En dat is een relatief klein areaal. Dat is goed mogelijk en dat kun je ook tot stand brengen door te streven naar combies/combinaties met andere functies. We hebben bijvoorbeeld ook gezocht naar agri/forestry-combinaties waarbij je walnotenhou

Fleur Wallenburg: en daar ging de verbinding met Gert-Jan Nabuurs hoofdleraar Europees bos aan de Wageningen Universiteit, nou wilde ik eigenlijk ook al net, meneer Nabuurs gaan bedanken. Dus we hebben niet heel veel gemist van dit gesprek. Dank nogmaals

## Integrated global assessment of the natural forest carbon potential

Geïntegreerde wereldwijde beoordeling van het koolstofpotentieel van natuurlijke bossen

- [Lidong Mo](#),
- [Constantin M. Zohner](#),
- [Peter B. Reich](#),
- [Jingjing Liang](#),
- [Sergio de Miguel](#),
- [Gert-Jan Nabuurs](#),
- [Susanne S. Renner](#),
- [Johan van den Hoogen](#),
- [Arnan Araza](#),
- [Martin Herold](#),
- [Leila Mirzaghali](#),
- [Haozhi Ma](#),
- [Colin Averill](#),
- [Oliver L. Phillips](#),
- [Javier G. P. Gamarra](#),
- [Iris Hordijk](#),
- [Devin Routh](#),
- [Meinrad Abegg](#),
- [Yves C. Adou Yao](#),
- [Giorgio Alberti](#),
- [Angelica M. Almeyda Zambrano](#),
- [Braulio Vilchez Alvarado](#),
- [Esteban Alvarez-Dávila](#),
- [Patricia Alvarez-Loayza](#),
- ...
- [Thomas W. Crowther](#)

[Nature](#) (2023) [Cite this article](#)

- [Metrics details](#)

### Abstract

Forests are a substantial terrestrial carbon sink, but anthropogenic changes in land use and climate have considerably reduced the scale of this system<sup>1</sup>. Remote-sensing estimates to quantify carbon losses from global forests<sup>2,3,4,5</sup> are characterized by considerable uncertainty and we lack a comprehensive ground-sourced evaluation to benchmark these estimates. Here we combine several ground-sourced<sup>6</sup> and satellite-derived approaches<sup>2,7,8</sup> to evaluate the scale of the global forest carbon potential outside agricultural and urban lands. Despite regional variation, the predictions demonstrated remarkable consistency at a global scale, with only a 12% difference between the ground-sourced and satellite-derived estimates. At present, global forest carbon storage is markedly under the natural potential, with a total deficit of 226 Gt (model

range = 151–363 Gt) in areas with low human footprint. Most (61%, 139 Gt C) of this potential is in areas with existing forests, in which ecosystem protection can allow forests to recover to maturity. The remaining 39% (87 Gt C) of potential lies in regions in which forests have been removed or fragmented. Although forests cannot be a substitute for emissions reductions, our results support the idea<sup>2,3,9</sup> that the conservation, restoration and sustainable management of diverse forests offer valuable contributions to meeting global climate and biodiversity targets.

## Main

The continuing climate and biodiversity crises threaten ecosystems and human society<sup>10,11</sup>. Representing 80–90% of the global plant biomass<sup>1</sup> and much of Earth’s terrestrial biodiversity<sup>12</sup>, forests play a key role in both climate-change mitigation and adaptation. So far, humans have removed almost half of Earth’s natural forests<sup>13,14</sup>, and we continue to lose a further 0.9–2.3 Gt C each year (about 15% of annual human carbon emissions) through deforestation<sup>15</sup>. In response to these pressing challenges, international environmental initiatives such as the UN Decade on Ecosystem Restoration<sup>16</sup>, the Kunming-Montreal Global Biodiversity Framework<sup>17</sup> and the Glasgow Leaders’ Declaration on Forests and Land Use<sup>18</sup> have been established to reduce deforestation and revitalize ecosystems. A key step in guiding such environmental targets is gaining a comprehensive understanding of the global distribution of existing forest carbon stocks, as well as the potential for carbon recapture if healthy ecosystems are allowed to recover<sup>3,19</sup>.

Remote-sensing observations have been central to the development of spatially continuous models of global forest biomass<sup>2,7,8</sup>. Building on these satellite-derived observations, a growing body of research has begun to use statistical extrapolations to estimate the potential extent of forest carbon stocks under natural conditions<sup>2,3,4</sup>. In recent years, refs. <sup>3,4</sup> combined remote-sensing forest-area estimates with coarse (ecoregion-level or country-level) carbon-storage estimates to approximate the global carbon potential. More recently, Walker et al.<sup>2</sup> used satellite-derived biomass estimates from natural forested regions to statistically extrapolate potential forest biomass in the absence of human disturbance. Despite yielding carbon potential estimates ranging from 200 to 300 Gt C, inherent strengths and weaknesses of each approach have given rise to uncertainty across studies, with suggestions that these estimates may be up to 4–5 times too high<sup>5,9,20,21</sup>. As a result, confidence in the carbon potential of forest ecosystems remains low. Without an independent, bottom-up assessment of global forest carbon potential built directly from ground-sourced data, evaluating and benchmarking these satellite-derived trends remains challenging. Overcoming this controversy requires consideration of various independent approaches to identify the extent of confidence and uncertainty across different land uses around the world.

Another key challenge in the development of potential biomass estimates is how to approximate the ‘natural’ state of vegetation stocks. To do this, recent extrapolations of forest potential have been built from data collected in protected land<sup>3</sup> or areas with minimal human disturbance<sup>2</sup>. However, a limitation of such approaches is that the focus on undisturbed areas restricts data to a few regions, which can bias results towards environments systematically avoided by humans. Protected areas may, for example, often exist in regions of marginal agricultural value or that possess unique ecological features<sup>22</sup>. An alternative approach to avoid such biases is to use observations across the full gradient of human disturbance and then use statistical techniques to remove the human footprint<sup>23</sup>. This method has proved successful in assessing the impact of historical human land use on soil carbon storage<sup>23</sup>. By allowing the inclusion of larger datasets across a broader range of environmental conditions, this approach has the potential to improve the statistical strength of biomass potential estimates. Consideration of the results from these different modelling datasets and approaches will be necessary to develop a comprehensive understanding of the global forest carbon potential.

Here we used a combination of independent modelling approaches to generate spatially explicit estimates of potential forest biomass worldwide. The first set of analyses was based on ‘bottom-up’ models built directly from ground-sourced (denoted GS) aboveground live biomass estimates from forest inventory

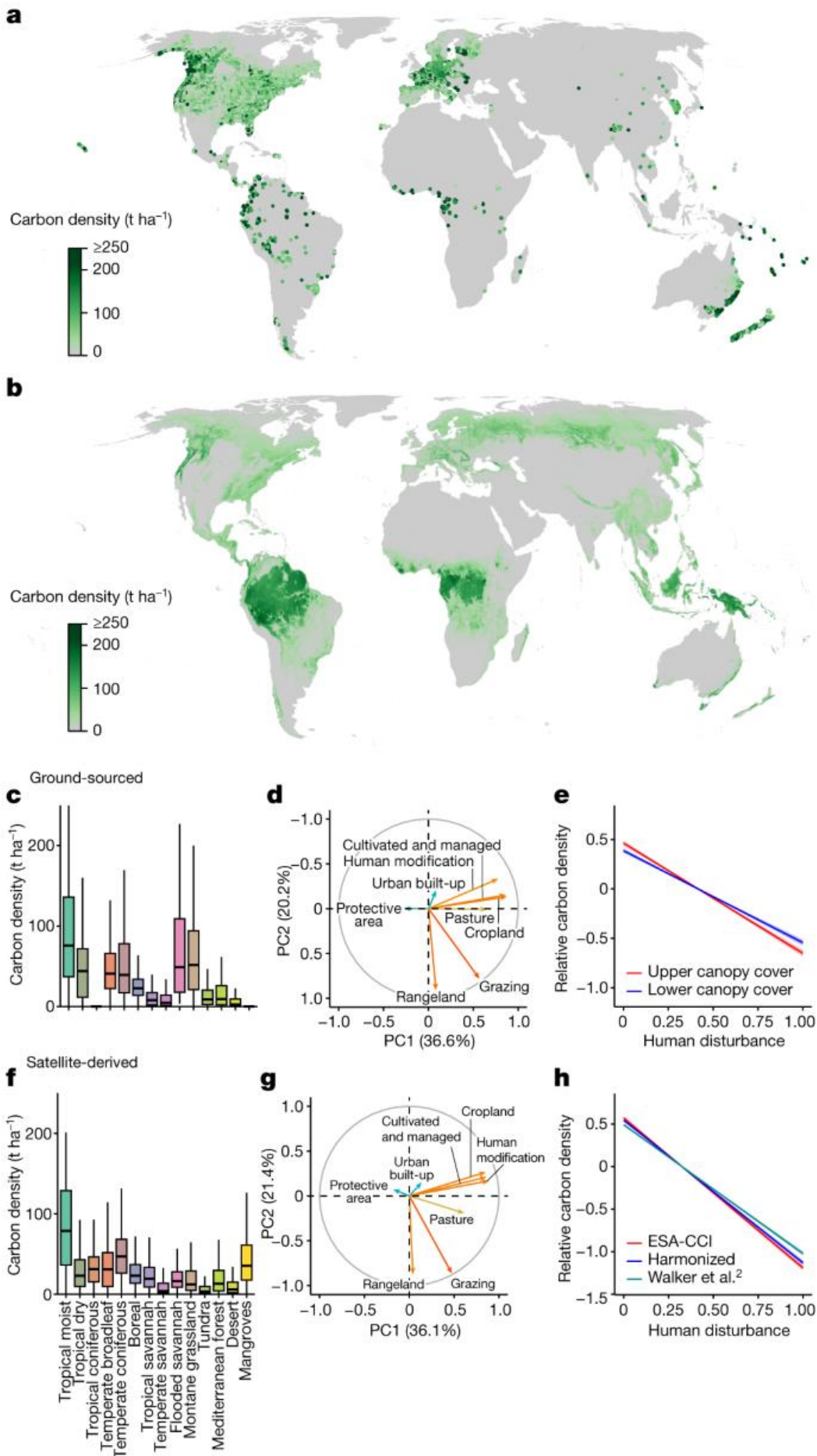


data of the Global Forest Biodiversity initiative (GFBI)<sup>6</sup>. This was contrasted with three ‘top-down’ models built from the latest satellite-derived (denoted SD), high-resolution aboveground forest biomass maps, namely, the European Space Agency’ Climate Change Initiative (ESA-CCI)<sup>7</sup>, Walker et al.<sup>2</sup> and harmonized<sup>8</sup> products. As our GS model operates independently from satellite information, it serves as a benchmark for evaluating the satellite-driven approaches. For all four datasets, we then approximated forest biomass under hypothetical natural conditions through two distinct methods: (1) representing human-disturbance indices as independent variables (model type 1) and (2) building models exclusively using data from undisturbed areas (model type 2). We define ‘natural’ forest potential as that which might exist in the absence of extensive anthropogenic degradation. Using each of these databases, we then scaled to total forest carbon potential using spatially explicit global estimates of root mass fraction<sup>24</sup>, soil carbon potential<sup>23</sup> and biome-level estimates of dead wood and litter<sup>19</sup>. By contrasting these diverse approaches and comparing the results against previous evaluations using a meta-analysis, we aimed to provide an integrated assessment of the natural forest carbon potential.

## Mapping the human impact on tree biomass

The underlying goal of our analysis was to investigate the impact of human land-use change on forest carbon stocks globally. Of course, many indigenous populations and local communities live in sustainable harmony with natural forests, often with beneficial impacts on ecosystem structure. However, we aimed to isolate the effects of extensive land-use change and anthropogenic degradation. To achieve this, we used a partial-regression approach in the first step, testing for the relationship between aboveground forest biomass and anthropogenic degradation, while controlling for the effects of climate, topography and soil conditions (Fig. [1d,g](#) and [Methods](#)). This analysis revealed a consistent decline in tree carbon density along the anthropogenic degradation gradient across all biomes, evident in both the ground-sourced and the satellite-derived biomass observations (Fig. [1e,h](#)).

**Fig. 1: The global distribution of tree carbon observations and the impact of human disturbances.**



**a**, Map of ground-sourced aboveground tree carbon observations (GFBI data; aggregated to 30-arcsec (1-km<sup>2</sup>) resolution). **b**, Satellite-derived ESA-CCI map of current aboveground tree carbon stocks (1-km

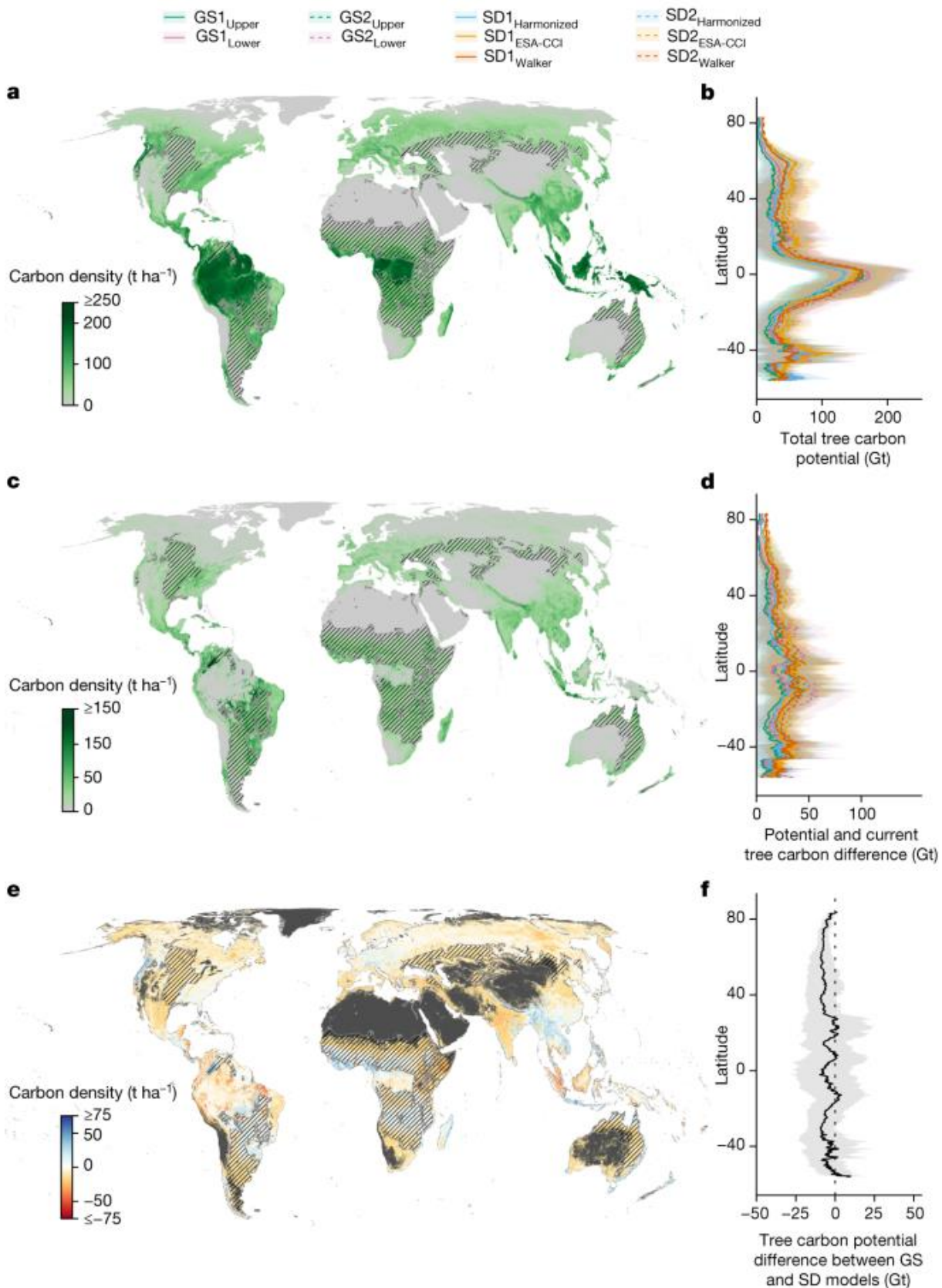
resolution). **c,f**, Observed biome-level tree carbon densities in existing forests based on ground-sourced (**c**) and satellite-derived (**f**) data. **d,g**, Principal component analysis (top two principal components shown) of the eight human-activity variables either directly or indirectly reflecting human-caused forest disturbances or the lack thereof, such as land-use change, human modification, cultivated and managed vegetation and wilderness area, to detect the effect of human disturbance on tree carbon densities for the ground-sourced (**d**) and satellite-derived data (**g**). **e,h**, Partial regression of the global variation in forest carbon density along the human-disturbance gradient (represented by the first principal component of the eight human-activity variables; see panels **d** and **g**) for the ground-sourced (**e**) and satellite-derived data (**h**), controlling for 40 environmental covariates. Relative carbon density is the observed carbon density divided by the global average.

[Full size image](#)

Our GS models of potential forest biomass combine plot-level aboveground forest carbon measurements with spatially explicit data reflecting climate, soil conditions, topography, forest canopy cover and human disturbance, using random-forest machine-learning models to interpolate our biomass measurements across the globe (see [Methods](#)). In the first set of models (GS1), we estimated the global forest carbon potential in the absence of human activity by statistically accounting for the impact of human disturbance<sup>23</sup>, setting all variables directly reflecting human disturbance to zero. By contrast, the second set of GS models (GS2) extrapolated the global forest carbon potential from data derived from protected areas with minimal human disturbance<sup>2,3</sup>. To account for uncertainties in canopy-cover estimates from the forest inventory plots, we incorporated upper and lower boundaries of canopy cover in each pixel, resulting in a total of four GS models: GS1<sub>Upper</sub>, GS1<sub>Lower</sub>, GS2<sub>Upper</sub> and GS2<sub>Lower</sub>. We extended this combination of approaches to evaluate the biomass potential for each of the three satellite-derived biomass products (ESA-CCI, Walker et al. and harmonized). The models included either all terrestrial regions (SD1) or only regions with minimal human disturbance (SD2), using the same set of predictor variables as covariates included in the GS models. This resulted in a total of six SD models: SD1<sub>ESA-CCI</sub>, SD1<sub>Walker</sub>, SD1<sub>Harmonized</sub>, SD2<sub>ESA-CCI</sub>, SD2<sub>Walker</sub> and SD2<sub>Harmonized</sub>.

The full combination of models allowed us to disentangle the effects of deforestation and forest degradation on tree carbon losses while representing data and model uncertainties. The total tree carbon potential was determined by summing the forest carbon that would naturally exist (1) outside existing forests (restoration potential) and (2) in existing, degraded forests (conservation potential). The resulting maps provide models of tree carbon potential under current (1979–2013) climate conditions in the hypothetical absence of human disturbance (Fig. [2a](#)).

**Fig. 2: The natural tree carbon potential under current climate conditions in the absence of humans.**



**a,b**, The total living tree carbon potential of 600 Gt C within the natural canopy cover area of 4.4 billion  $ha^2$ . **c,d**, The differences between current and potential tree carbon stocks, totalling 217 Gt C. **e,f**, The difference of tree carbon potential between the GS and SD models, subtracting the mean values of the six SD models from the mean values of the four GS models. Blue colours indicate that the GS models predict higher potential than the SD models, whereas red colours indicate the opposite. **b,d,f**, Latitudinal distributions (mean  $\pm$  standard deviation) of the total tree carbon potential for the GS1, GS2, SD1 and SD2 models (**b**), the difference between current and potential tree carbon (**d**) and the difference

of tree carbon potential between the GS and SD models (f). Maps represent the average estimates across all GS and SD models and are projected at 30-arcsec (about 1-km<sup>2</sup>) resolution. We show dryland and savannah biomes with stripes to denote that many of these areas are not appropriate for forest restoration. Where trees would naturally exist, they often exist far below 100% canopy cover, and restoration of forest cover should be limited to natural conditions.

[Full size image](#)

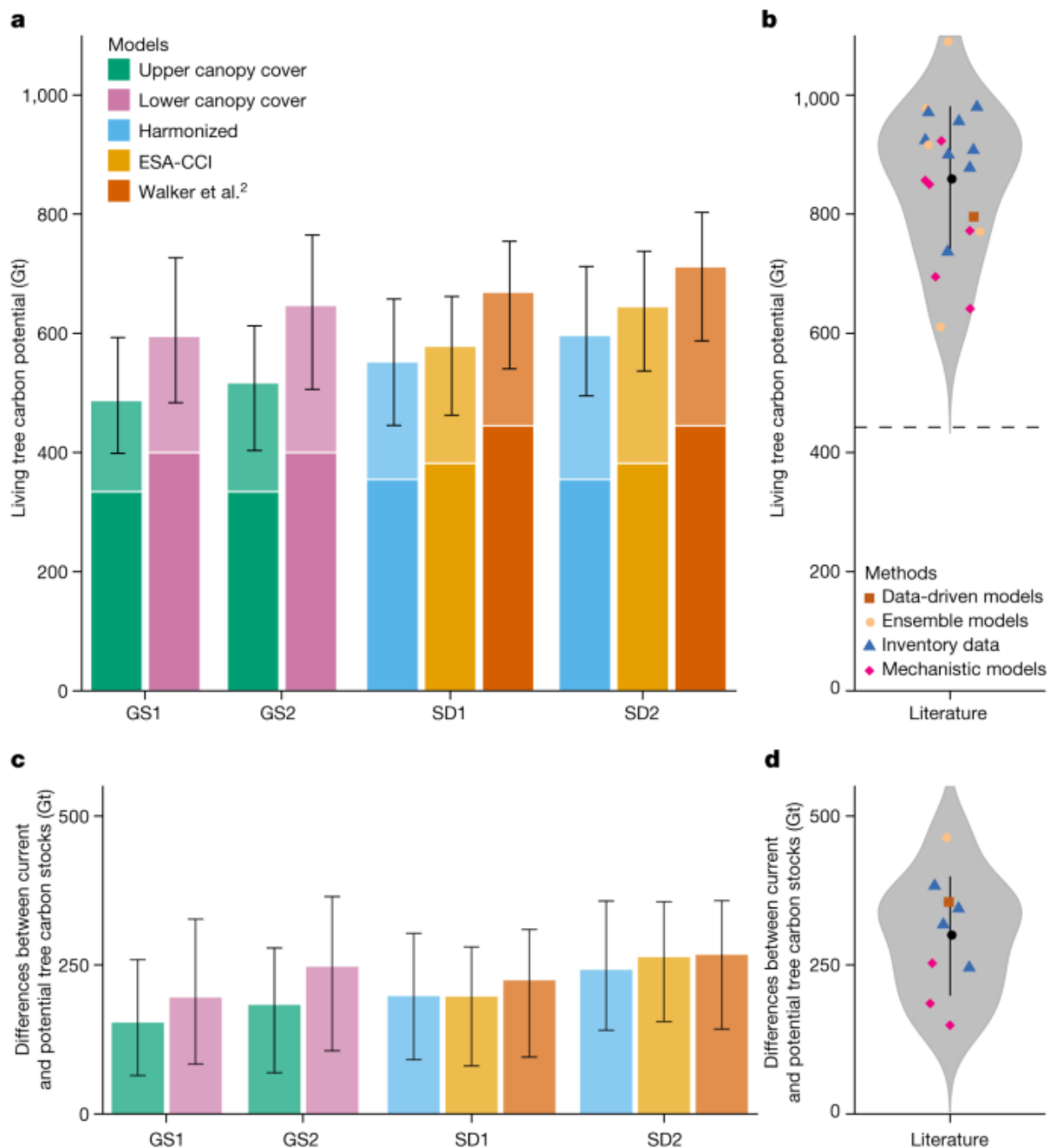
The coefficients of variation from a bootstrapping procedure showed that existing and potential carbon stocks were estimated with confidence across all models. For 90–100% of the pixels inside the existing and potential forest area, the coefficients of variation were below 20% (Supplementary Figs. 1 and 2). A spatial-validation procedure (spatially buffered leave-one-out cross-validation (LOO-CV)), accounting for the potential effects of spatial autocorrelation on model-validation statistics, showed that the GS and SD models explained 70–77% or 82–87% of the spatial variation in tree biomass, respectively (Supplementary Table 1 and Supplementary Fig. 3). Furthermore, when specifically considering disturbed regions with human-disturbance levels ranging from 10% to 60%, the explained variation in tree biomass remained high (>60%), showing that our models effectively captured the variation of carbon stocks in regions with high human footprint (Supplementary Fig. 4).

## Comparison between models

Despite discrepancies in certain regions, there was high overall agreement between the ground-sourced and satellite-derived biomass estimations at the global scale (average  $R^2$  of 0.72 at a spatial resolution of approximately 1 km<sup>2</sup>; Supplementary Figs. 5–9). This agreement translated to similar estimates of existing live tree biomass: 367 Gt C (model range = 334–400 Gt C) for the GS models and 394 Gt C (model range 355–445 Gt C) for the SD models (<7% difference). A comparison of existing biomass estimates across the latitudinal gradient also showed high inter-model consistency, with the GS model predicting slightly higher biomass values than the SD model for the equatorial zone and lower biomass values at high-latitude regions of the Southern Hemisphere (>40 °S) (Supplementary Fig. 6). On average, the models predicted that 69% of live tree biomass is stored in tropical regions, with temperate, boreal and dryland regions accounting for 18%, 11% and 1%, respectively (Supplementary Table 3).

Using all sets of GS and SD models, we could estimate the total potential living tree carbon that would exist in the absence of human influence. Our models projected considerable gains in the hypothetical natural forest biomass, with a mean estimate for total potential living tree carbon of 600 Gt C (model range = 487–712 Gt C). The individual model estimates were as follows: GS1<sub>Upper</sub> = 487 Gt C, GS1<sub>Lower</sub> = 595 Gt C, GS2<sub>Upper</sub> = 517 Gt C, GS2<sub>Lower</sub> = 647 Gt C, SD1<sub>Harmonized</sub> = 552 Gt C, SD1<sub>ESA-CCI</sub> = 578 Gt C, SD1<sub>Walker</sub> = 669 Gt C, SD2<sub>Harmonized</sub> = 596 Gt C, SD2<sub>ESA-CCI</sub> = 645 Gt C and SD2<sub>Walker</sub> = 712 Gt C (Figs. 3 and 4 and Supplementary Tables 2 and 3). The highest estimates were derived from the Walker et al.<sup>2</sup> map, with the GS, harmonized biomass and ESA-CCI estimates being 19%, 17% and 11% lower, respectively. Overall, we predict that, under current climate conditions, a further 217 Gt (model range = 153–267 Gt) of living tree carbon could potentially exist in the absence of humans (Fig. 5b). Of this potential, 123 Gt C (99–153 Gt C) can be attributed to tropical regions, 55 Gt C (40–66 Gt C) to temperate regions, 14 Gt C (5–25 Gt C) to boreal regions and 25 Gt C (9–41 Gt C) to dryland regions (Supplementary Table 3).

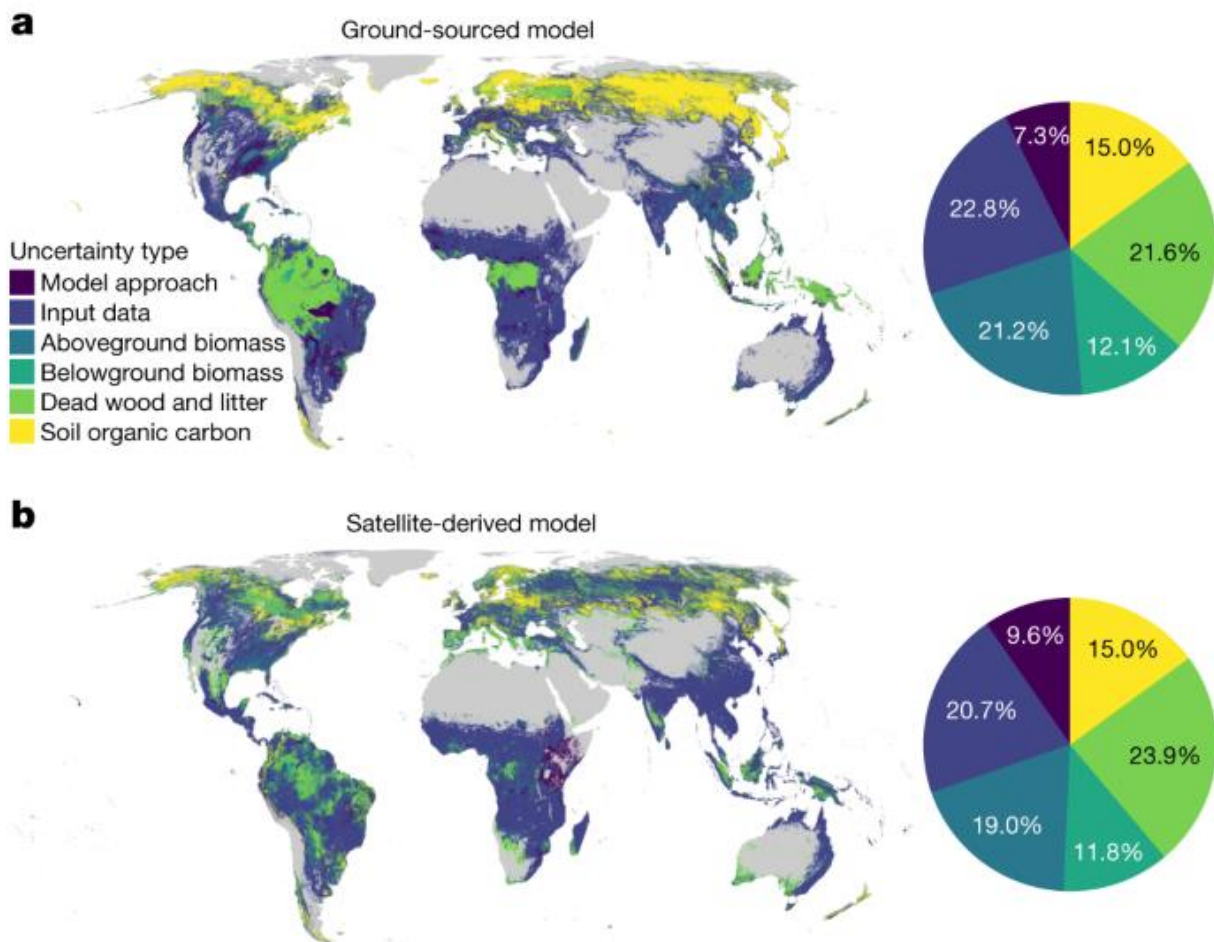
**Fig. 3: The living tree carbon potential estimated from the ground-sourced (GS1 and GS2) and satellite-derived (SD1 and SD2) models.**



**a**, Total estimated living tree biomass potential of the GS1, GS2, SD1 and SD2 models. Error bars represent the lower and upper boundaries based on the 5% and 95% quantiles from a bootstrapping procedure. Colours represent the different input datasets, that is, upper or lower canopy cover boundaries (GS models) and ESA-CCI, Walker et al.<sup>2</sup> or harmonized (SD models). Light colours above white lines indicate the difference between current and potential tree carbon stocks. **b**, Meta-analysis showing literature estimates of living tree carbon potential based on ensemble models<sup>4,53,54</sup>, inventory data<sup>19,55,56,57,58,59,60,61</sup> and mechanistic<sup>62,63,64,65,66,67</sup> or data-driven<sup>2</sup> models. The horizontal dashed line represents the average existing living tree carbon of 443 Gt C estimated in these publications. **c**, Differences between current and potential tree carbon stocks. **d**, Literature estimates for the difference between current and potential tree carbon stocks from ref. <sup>4</sup> (ensemble models), refs. <sup>1,53,58,61</sup> (inventory data), refs. <sup>63,64</sup> (mechanistic models) and ref. <sup>2</sup> (data-driven models).

[Full size image](#)

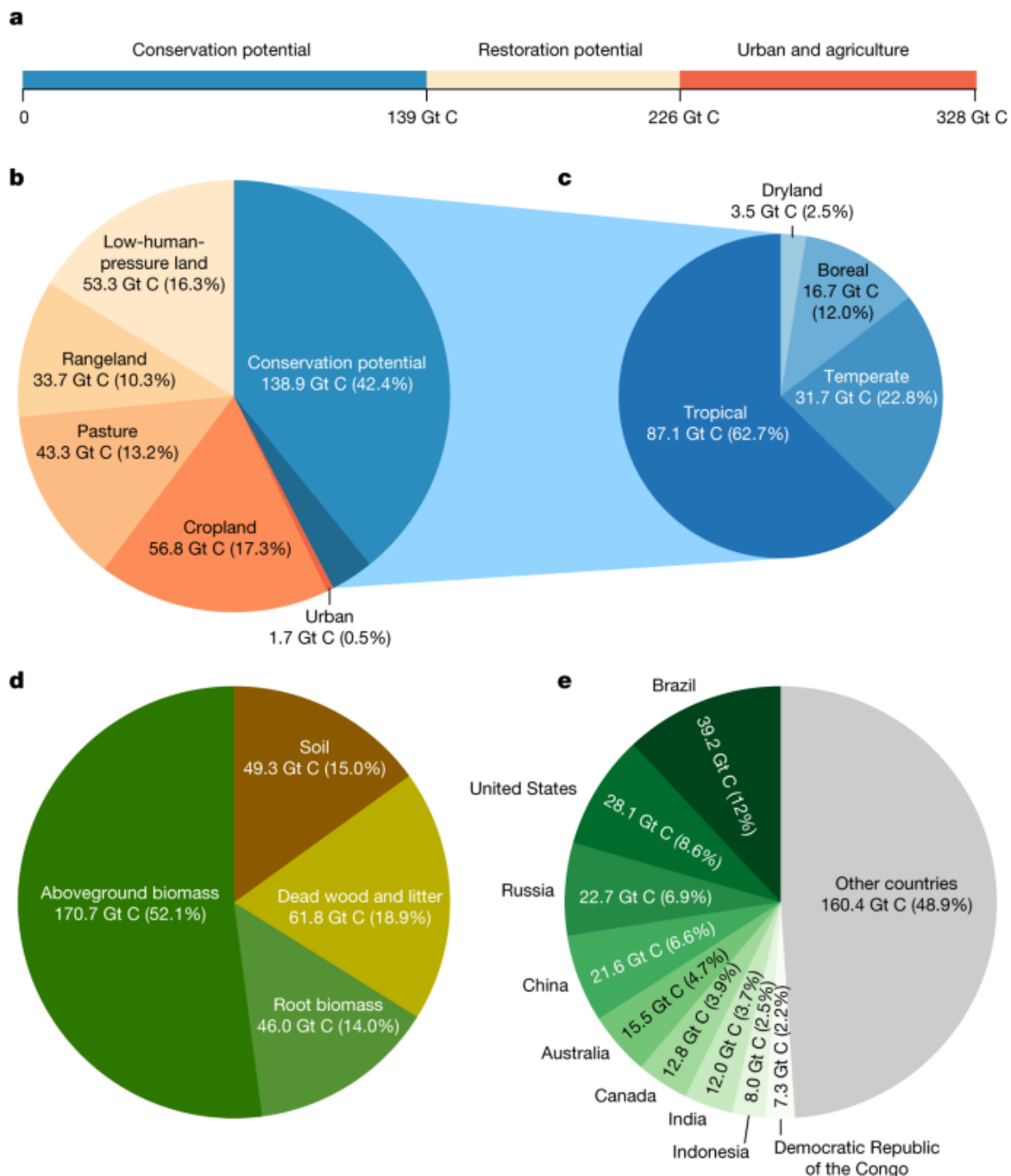
**Fig. 4: Sources of uncertainty in forest carbon potential for the GS and SD models.**



**a,b**, Relative contribution of individual uncertainty sources to the overall uncertainty in carbon potential for the GS (**a**) and SD (**b**) models: (1) model approach (type 1 versus type 2 models); (2) input data (current aboveground tree carbon input, that is, upper and lower canopy cover boundaries for GS models and ESA-CCI, Walker et al.<sup>2</sup> and harmonized for SD models); (3) aboveground biomass potential estimates (bootstrapping); (4) belowground biomass (accounting for uncertainties in both root mass fraction and aboveground biomass); (5) dead wood and litter (accounting for uncertainties in both dead wood and litter-to-tree biomass ratios and tree biomass); and (6) soil organic carbon potential<sup>23</sup>. The maps show the top uncertainty source within each pixel. The pie charts show the relative contribution of uncertainties worldwide.

[Full size image](#)

**Fig. 5: Contribution of land-use types, forest types, carbon pools and countries to the difference between current and potential ecosystem-level carbon stocks.**



**a**, Of the 328 Gt C discrepancy between current and potential carbon stocks, 226 Gt C is found outside urban and agricultural (cropland and pasture) areas, with 61% in forested regions in which the recovery of degraded ecosystems can promote carbon capture (conservation potential) and 39% in regions in which forests have been removed (restoration potential). **b**, Relative contribution of forest degradation (conservation potential; blue area) and land-cover change (orange colours) to the difference between current and potential ecosystem-level carbon stocks. The darker blue area represents the conservation potential of 10.5 Gt C in forest plantation regions. **c**, Relative contribution of tropical, temperate, boreal and dryland forests to the total forest conservation potential. **d**, Relative contribution of the three main carbon pools (living biomass, dead wood and litter, and soil) to the difference between current and potential carbon stocks. **e**, The nine countries contributing more than 50% to the difference between current and potential carbon stocks.

[Full size image](#)



Despite the broad consensus on the global top-down and bottom-up carbon potential estimates, considerable spatial variations were observed in the models. The SD models tended to predict higher potential carbon stocks than the GS models across 82% of pixels, particularly in South American tropical forests (Fig. 2e,f), suggesting possible overestimation of satellite-derived biomass potential in these regions. More ground-sourced data are needed from tropical areas to improve accuracy and balance the high sample sizes available for temperate regions<sup>7,25</sup>. On the other hand, the GS models predicted slightly higher potential than the SD models in subtropical regions and temperate forests of Europe.

We also show that the type 1 models (GS1 and SD1) predicted a 47 Gt C lower potential than the type 2 models (GS2 and SD2; Fig. 3). The focus on ‘undisturbed’ regions in the type 2 models may introduce bias by favouring regions with unusually high biomass. By contrast, the type 1 models incorporated observations across the full human-disturbance gradient, potentially resulting in an underestimation of potential in regions with incomplete historic-disturbance data. Furthermore, we imposed a constraint on forest biomass potential by limiting forest growth to the potential tree cover range projected in a previous analysis<sup>3</sup>. If this spatial constraint is removed to compare our model with the estimate of Walker et al.<sup>2</sup> of 796 Gt C (without such constraints), our SD2<sub>Walker</sub> model generates a similar total potential of 760 Gt C (<5% difference). Thus, our mean estimate of Earth’s total potential living tree carbon of 600 Gt C from the ensemble of modelling approaches is probably conservative.

## Total ecosystem carbon potential

To determine the total carbon storage potential of natural woody ecosystems, we converted our estimates of living tree biomass into total ecosystem carbon stocks by incorporating global data on soil carbon<sup>23</sup>, dead wood and litter<sup>19</sup>. To represent the various sources of uncertainty (Fig. 4), we considered: (1) model type (types 1 and 2); (2) input data (upper and lower canopy cover boundaries for GS models; ESA-CCI, Walker et al. and harmonized for SD models); (3) aboveground biomass potential (bootstrapping); (4) tree root biomass; (5) dead wood and litter; and (6) soil carbon<sup>23</sup>. The GS and SD models exhibited similar uncertainty contributions globally, with 21.2% and 19.0% attributed to aboveground living tree biomass potential, 21.6% and 23.9% to dead wood and litter, 22.8% and 20.7% to aboveground biomass input data, 15.0% to soil carbon, 12.1% and 11.8% to root biomass and 7.3% and 9.6% to model type. Soil carbon emerged as the primary source of uncertainty in regions with high latitudes and elevation. By contrast, aboveground biomass input data and dead wood and litter were the primary sources of uncertainty in dry and humid tropical areas, respectively (Fig. 4).

Considering all carbon pools together, we estimate that current forest carbon storage is 328 Gt (221–472 Gt) lower than the full natural potential (Fig. 5 and Table 1). Of this difference, 226 Gt C (151–363 Gt C) exist outside urban and agricultural areas, with 61% in forested regions in which sustainable management and conservation can promote carbon capture through the recovery of degraded ecosystems and 39% in regions in which forests have been removed (Table 1). These estimates highlight that forest conservation, restoration and sustainable management can help achieve climate targets by mitigating emissions and enhancing carbon sequestration.

### **Table 1 Differences between current and potential carbon stocks for living tree biomass, dead wood and litter, soil (0–2 m depth) and total ecosystem carbon in different land-use types**

[Full size table](#)

## Carbon potential in existing forests

Previous work has suggested that up to 80% of the world’s forests are secondary systems that have undergone anthropogenic degradation<sup>26</sup>. Our models corroborate these findings, revealing a considerable potential for carbon capture in existing forests by allowing these degraded ecosystems to regenerate to maturity. The difference between current and potential ecosystem carbon stocks amounts to 139 Gt C (108–228 Gt C) in existing forests, representing 61% of the total difference when excluding urban and

agricultural areas (Table 1). Of the total 139 Gt, 11 Gt (8%) can be attributed to biomass loss in existing forest plantations, in which restoring diverse ecosystems could lead to further carbon capture. The remaining 128 Gt can be attributed to human degradation in other forest ecosystems. These findings highlight the importance of forest conservation for carbon capture, as ecosystems are allowed to recover to their mature states. It suggests that a substantial proportion of carbon capture can be achieved with minimal land-use conflicts. However, it is essential to acknowledge that the demand for wood and other forest-based products imposes limitations on this potential, given their climate benefits as substitutes for carbon-intensive materials such as fossil fuels and concrete<sup>5</sup>. Nonetheless, evidence shows that reductions in harvesting intensity and forest degradation can deliver important climate benefits<sup>27</sup>. Moreover, our model might underestimate the extent of degradation owing to challenges in capturing historical land-use legacies and limited data availability on plantations in certain countries<sup>28</sup>. These observations reinforce the importance of effective forest conservation and management not only in reducing future carbon emissions<sup>15,29</sup> but also in removing carbon that has already been released into the atmosphere.

## Carbon potential in converted lands

In areas in which forests have been removed, the difference between the current and potential forest carbon stocks amounts to 189 Gt C (112–269 Gt C). Of this difference, 30% (57 Gt C) can be attributed to cropland areas, 28% (53 Gt C) to areas experiencing low anthropogenic pressure at present, 23% (43 Gt C) to pasture land, 18% (34 Gt C) to rangeland and 1% (2 Gt C) to urban areas (Fig. 5, Table 1 and Supplementary Fig. 10). It is important to recognize that the scale of this potential is contingent on social land-use constraints. Socially responsible ecosystem restoration must be driven by the land-use decisions of local communities, especially indigenous communities that often face marginalization. Sustainable economic development that promotes approaches that work with nature (for example, agroforestry, ecotourism etc.) can provide critical avenues for long-term financial security as a result of healthy nature. Also, it is important to acknowledge that forests can lead to reductions in surface albedo<sup>30,31</sup>, which generally have warming effects in high-latitude regions. Conversely, the local biophysical cooling effects of forests in warmer regions<sup>32</sup> probably enhance the climate-adaptation benefits in the global south.

Taking into account the future food and feed demand, the Intergovernmental Panel on Climate Change (IPCC) highlights a range of measures to improve ecosystem health and carbon storage in the land-use sector<sup>33</sup>. This will require a diverse range of approaches, including sustainable diets, reducing food waste, rewetting, improved soil health, methane reduction and promoting the use of wood in construction. We estimate that approximately 41% of the difference between current and potential ecosystem carbon stocks outside existing forests, within the areas of the world that would naturally be forested, can be attributed to livestock grazing areas (pasture and rangelands). Also, 36% of the world's crop yields are being used for animal feed<sup>34</sup>. This impact of animal husbandry on forest ecosystems underscores the potential implications of transitioning to more plant-based diets. Besides reducing greenhouse gases that directly stem from animal farming (methane emissions, food production), a reduction in meat consumption could reduce emissions from land-use change and create large carbon sinks if ecosystems were allowed to regenerate on former pasture lands<sup>35,36</sup>.

## Comparison with previous estimates

Our integrated estimate of the difference between current and potential global living tree biomass (217 Gt C) falls at the lower end of the range of previous estimates, which ranged from 150 to 446 Gt C (Fig. 3c,d). Also, our estimate of the extra potential for total ecosystem carbon storage outside urban and agricultural land (226 Gt C) aligns closely with recent global-scale estimates of 205 and 287 Gt C (refs. 2,3). However, it is worth noting that three previous data-driven approaches, not included in this meta-analysis because of methodological differences, have suggested carbon potential values below this range. Specifically, Lewis et al.<sup>9</sup> considered more rigorous social constraints and estimated that natural restoration of 350 Mha of deforested, tropical land could capture 42 Gt C in living tree biomass. Scaling this estimate to 900 million hectares yielded a potential of 89–108 Gt tree carbon<sup>20</sup>, which is comparable

with our estimate of tree biomass restoration potential of 91 Gt C outside existing forest, urban areas and cropland regions (Table 1). Similarly, Roebroek et al.<sup>5</sup> recently reported that the carbon potential in existing forests could be as low as 44 Gt C. Their estimate is considerably lower than our conservation potential estimate of 139 Gt C. This difference arises because Roebroek et al.<sup>5</sup> focused only on aboveground tree biomass (excluding soil, roots, dead wood and leaf litter) and only considered the tree cover of existing forested regions. When we narrow our analysis to aboveground biomass in these forests, we recover a similar estimate of forest potential of 50 (39–63) Gt C. Nonetheless, when we consider studies that focused on the total ecosystem potential in all forest regions, our analysis reveals a distinct overlap that provides confidence in the scale of carbon losses from the global forest system.

## Discussion

Understanding the potential for carbon storage in natural forests is crucial for comprehending their role in combating climate change. Our combined modelling approach, including ten estimates from this study and nine others from previous studies, allows us to identify the extent of overlap across diverse approaches and increases our confidence about the scale of the forest carbon potential across the globe. We found that total forest carbon storage is, at present, 328 Gt C (model range = 221–472 Gt C) below its full potential. Of this potential, 102 Gt C (69–134 Gt C) exist in urban areas, cropland and permanent pasture sites, in which substantial restoration is highly unlikely. Yet, a potential of 226 Gt C (151–363 Gt C) is in existing forests and regions with low human pressure (Table 1). Of this constrained forest carbon potential, 139 Gt C (61%) can be found in regions that are already forested. This highlights that the prevention of deforestation does not only contribute to the reduction of carbon emissions but has large carbon drawdown potential if ecosystems can be allowed to return to maturity. Improved forest management and restoration to reconnect fragmented forest landscapes contribute a considerable 87 Gt (39%) to the extra carbon drawdown potential. We stress that, despite considering the broad land-use types, we cannot identify detailed land-use activities at a high resolution, so different social and economic considerations may place further constraints on the scale of this potential. Nevertheless, this work highlights the potential contribution of forest conservation, restoration and sustainable management in capturing carbon from the atmosphere.

The development of current and natural forest carbon maps involved several approaches and data sources with varying strengths and weaknesses. This ensemble of modelling approaches can help to identify the extent of agreement and uncertainty across modelling approaches, enabling a comprehensive understanding of carbon potential at a global scale. As new satellite technologies, such as the Global Ecosystem Dynamics Investigation (GEDI) project<sup>37</sup>, begin to reveal high-resolution information about forest structure, it will be increasingly important to refine the spatial and temporal resolution of these carbon stock models. Our multimodel and multidata comparison pinpoints regional variation in the main sources of uncertainty in forest carbon potential, highlighting the need for improved aboveground data-sampling efforts in the tropics and soil carbon sampling at high latitudes (Fig. 4). As such, continuing efforts to refine the confidence in this forest carbon potential require advancements in remote-sensing instrumentation<sup>7</sup>, field-monitoring strategies with sustained funding for research teams and field workers, especially in the Global South<sup>38,39</sup>, better representation of temporal dynamics in carbon stocks, especially in ecosystems prone to natural disturbances<sup>40</sup>, and methodology to allow for strict and verifiable integration of ground data and remote sensing into comprehensive carbon stock estimates<sup>41</sup>. Fair and equitable funding support for sustaining and sharing tropical forest data is vital to reduce global sampling biases in forest inventory efforts<sup>38,39</sup> (Supplementary Fig. 11).

It is important to note that our estimates of potential carbon capture in woody ecosystems pertain only to the biophysical potential and do not account for future changes in human pressure that may threaten forests<sup>42,43</sup>. Moreover, our estimations are based on recent climate conditions (1979–2013). If fossil fuel emissions continue to rise, the capacity of ecosystems to capture and store carbon will be threatened by climate-change-induced factors such as increasing temperature, drought and fire risks<sup>44,45</sup>. CO<sub>2</sub> fertilization also has the potential to further change this system<sup>46</sup>. The dynamic and vulnerable nature of

forests underscores the urgency of conserving existing ecosystems to maintain their carbon sink potential and highlights the urgent need to uphold no-deforestation pledges at the 26th UN Climate Change Conference of the Parties (COP26), including public and private-sector commitments to end forest loss as soon as 2025 (refs. [18,47,48](#)).

Given the positive effect of biological diversity on ecosystem productivity<sup>6,49</sup>, the magnitude of the estimates presented here can only be achieved in ecosystems that support a natural diversity of species. Indeed, almost half of global forest production can be directly or indirectly attributed to the role of biodiversity<sup>6</sup>, highlighting that the full carbon potential cannot be achieved without a healthy diversity of species. Ecologically responsible forest restoration does not include the conversion of other natural ecosystem types, such as grasslands, peatlands and wetlands, that are equally essential. Restoration can take many forms, including the protection of land to allow natural vegetation recovery, soil microbiome enhancement, enrichment planting or reintroducing wild animals<sup>33,50</sup>. It also includes a vast array of active management practices, such as sustainable agroforestry, silviculture or permaculture practices, to promote biodiversity in managed systems. Ultimately, the protection and restoration of forest ecosystems are complex social, political and economic challenges that require the development of land-management policies that give priority to the rights and wellbeing of local communities and indigenous people<sup>51</sup>. Only when healthy biodiversity is the preferred choice for local people can ecosystem-restoration initiatives be sustainable in the long term<sup>52</sup>. When built in a socially and ecologically responsible way, the promotion of diverse forests can contribute substantially to achieving our combined climate and biodiversity goals.

## Methods

### Ground-sourced tree biomass

#### Forest inventory data

Plot-level forest inventory records were obtained from data compiled in the GFBI database<sup>6</sup> (<http://www.gfbinitiative.org>), which hosts information for 1,188,771 plots (median plot size = 250 m<sup>2</sup>) from every continent except Antarctica (Fig. [1](#)). Each plot contains information on stem diameter at breast height (DBH) for each tree<sup>6</sup>. Individuals with a DBH < 5 cm were removed from the analysis. Quality controls of tree density values were conducted and we removed plots with tree densities that fell outside the median ± 2.5 times the median absolute deviation (moderately conservative threshold)<sup>68</sup> in each biome (6% of total plots). This resulted in retaining a total of 25,779,993 tree observations in 1,089,026 plots.

#### Biomass estimation for individual trees

For extratropical biomes, we used 430 species-specific DBH-based allometric equations obtained from the GlobAllomeTree database<sup>69</sup> to estimate the aboveground biomass of each tree,  $W$ . These allometric equations use a common logarithmic equation for estimating aboveground biomass from DBH measures<sup>70</sup>:

$$\ln(W) = \beta_0 + \beta_1 \times \ln(\text{DBH}) \quad (1)$$

in which  $W$  is the predicted individual aboveground biomass (kg dry weight), DBH is the measured diameter at breast height (cm),  $\ln$  is the natural logarithm and  $\beta_0$  and  $\beta_1$  are the parameter estimates.

Following ref. [70](#), we applied back calculation to generate a pseudo dataset for biomass changes along DBH gradients based on each of the 430 allometric equations. To generate the pseudo data, we applied the following rules: (1) for a DBH between 5 and 25 cm, each centimetre was assigned a corresponding pseudo biomass value; (2) for a DBH between 25 and 100 cm, every 5 cm was assigned a corresponding value; (3) for a DBH between 100 and 300 cm (maximum DBH), every 10 cm was assigned a

corresponding value. We then trained biome-specific allometric equations (varying in the  $\beta_0$  and  $\beta_1$  parameter estimates) based on the pseudo DBH and biomass dataset<sup>71</sup> (Supplementary Fig. 12 and Supplementary Table 4).

Biomass estimations for the tropics followed the allometric model for pantropical regions from ref. 72, which is available through the R package BIOMASS (ref. 73). These equations require information on wood density, which came from the Global Wood Density Database<sup>74</sup> and the Biomass And Allometry Database (BAAD)<sup>75</sup>. To match the binomial species names between the GFBI and the wood density databases, we standardized species binomials using the Taxonomic Name Resolution Service (TNRS)<sup>76</sup>.

### Plot-level tree biomass calculation

After computing the aboveground dry biomass for all approximately 28 million individuals in our dataset, plot-level biomass values were obtained by summing the biomass of all individuals in the respective plot. For plots that contained data for several years, we calculated the mean of these years. The median year of observation across all plots was 2002. Subsequently, the biomass densities (in  $\text{t ha}^{-1}$ ) of each plot were obtained by dividing the total aboveground biomass ( $W$ ) by the plot area. Carbon values were obtained by multiplying tree biomass by biome-specific wood carbon concentrations, ranging from 45.6% in tropical moist broadleaf forest to 50.1% in temperate conifer forest<sup>77</sup> (see Supplementary Table 5). The spatial modelling was performed at 30-arcsec (about  $1\text{-km}^2$ ) resolution and we therefore averaged tree carbon-density values for plots located in the same 30-arcsec pixel.

To avoid overestimation of carbon densities, we removed (1) values larger than the maximum carbon density ever recorded for forests ( $1,867 \text{ t C ha}^{-1}$ ) and (2) values that fell outside the median  $\pm 2.5$  times the median absolute deviation (moderately conservative threshold) in each biome<sup>68,78</sup>. Small outlier values were kept, however, if they fell in human-modified non-forest landscapes, that is, regions with a human-disturbance index  $>10\%$  and canopy cover  $<10\%$ . This was done to avoid the underestimation of current carbon in croplands, pasture lands and urban areas that can contain notable amounts of existing biomass in trees outside forests<sup>79</sup>. To obtain normally distributed data, the carbon-density values were log-transformed before the median absolute deviation was calculated, using the following equation (Supplementary Fig. 13):

$$x_{\text{transformed}} = \log(x+1)$$

(2)

This removed 6.4% of the data (0–6% in biomes), resulting in a total of 527,767 spatially distinct carbon-density values used for the final analysis.

## Environmental and human-disturbance variables

### Environmental covariates

In total, 40 layers, reflecting climate, soil and topographic features, were used as covariates in our analyses (Supplementary Table 6). All layers were standardized to 30-arcsec resolution ( $1 \text{ km}^2$  at the equator). Layers for 19 bioclimatic variables came from the CHELSA version 1.2 open climate database ([www.chelsa-climate.org](http://www.chelsa-climate.org))<sup>80</sup>, topographic information (elevation, slope, roughness, eastness, northness, aspect cosine, aspect sine and profile curvature) from the EarthEnv ([www.earthenv.org/topography](http://www.earthenv.org/topography)) database<sup>81</sup>, cloud cover (annual mean, inter-annual standard deviation and intra-annual standard deviation) from the EarthEnv ([www.earthenv.org/cloud](http://www.earthenv.org/cloud)) database and ref. 82, depth to the water table from ref. 83, the annual mean of solar radiation and wind speed from the WorldClim database (version 2)<sup>84</sup>, absolute depth to bedrock and soil texture (clay content, coarse fragments, sand content, silt content and soil pH), averaged for the depth between 0 to 100 cm below surface, from the SoilGrids database<sup>85</sup> and the Global Aridity Index from the Global Aridity Index and Potential Evapotranspiration (ET0) Climate Database version 2.0 (refs. 86,87).

## Human-disturbance covariates

To represent human disturbance in our models, we used eight global layers that directly reflect anthropogenic effects on the environment. Information on the proportion of cultivated and managed vegetation and urban built-up areas in each pixel came from the EarthEnv database<sup>88</sup>. These maps integrate four global land-cover products to represent accuracy-weighted consensus information on the prevalence of land-cover classes at 1-km resolution across the globe (except for Antarctica). By representing the proportional area of anthropogenic modification in each pixel (urban area or managed vegetation), the maps provide information on the spatial extent of human disturbance within pixels.

Information on agricultural land use (cropland, grazing, pasture and rangeland layers transformed to the percentage of agricultural land in each pixel) came from the HYDE database version 3.1 (refs. <sup>89,90</sup>). Each layer represents the proportional area of cropland, grazing, pasture or rangeland in each pixel, thus allowing us to account for the individual impacts of agricultural land-use types.

Information on human modification, reflecting the overall intensity of human activity, came from ref. <sup>91</sup>. Rather than representing the impact of individual human-modification classes, such as urban areas or cropland, this map provides a cumulative measure of human modification based on models of the physical extent of 13 anthropogenic stressors in five main classes: (1) human settlement (population density, built-up areas); (2) agriculture (cropland, livestock); (3) transport (major roads, minor roads, two tracks, railroads); (4) mining and energy production (mining, oil wells, wind turbines); and (5) electrical infrastructure (power lines, night-time lights).

All variables were scaled to represent a continuous gradient of human impact, whereby values of zero indicate no human impact in the respective pixel and values of 1 indicate maximum human impact. Also, we included information on the regions with minimal human disturbance across the globe, using the global protected area map from the World Database on Protected Areas<sup>92,93</sup>. Protected areas were treated as a binary variable of whether the respective pixel is intentionally disturbed by humans or not (that is, strict nature reserve or wilderness area)<sup>94</sup>.

## Geospatial modelling of existing tree carbon

### Ground-sourced tree carbon density model

To represent the uncertainty in canopy cover of the forest inventory plots, we used upper and lower boundaries of canopy cover in each pixel at approximately 30-m resolution to convert C per plot to C per pixel<sup>95</sup>. We either assumed the canopy cover (% forested) of each forest inventory plot to represent the maximum canopy cover observed for the respective 1-km<sup>2</sup> pixel (termed ‘upper canopy cover estimate’) or the mean canopy cover of the forested part ( $\geq 10\%$  canopy cover) of the respective pixel (‘lower canopy cover estimate’). This canopy cover range ensured that our estimates represent the range of feasible sampling designs, as forest inventory plots can be biased towards high canopy cover sites within pixels rather than representing the average forest canopy cover. To convert C per plot into C per pixel, we divided the C per plot by the canopy cover within the plot (assuming either upper or lower canopy cover) and multiplied by canopy cover of the entire pixel, that is,  $C \text{ per pixel} = (C \text{ per plot}) / (\text{canopy cover within plot}) \times (\% \text{ forested per pixel})$ . Thus, the resulting carbon value is inversely related to the canopy cover of the forest inventory plots: if the plot locations are assumed to reflect the maximum canopy cover in the pixel, then the resulting carbon estimate is the smallest; if instead the plots reflect the mean canopy cover, then the resulting carbon estimate is the largest. Note that we do not consider the scenario in which the plots are preferentially located in areas with minimum forest canopy cover, as this would lead to unrealistically high pixel-level carbon estimates (and carbon potential values) and is also unrealistic given the study design of the forest inventories underpinning the data. All subsequent analyses were conducted using C per pixel derived from both the upper and lower plot-level canopy cover estimates, allowing us to represent the uncertainty associated with canopy cover.

To train spatially explicit tree carbon models across the world’s forests, we ran random-forest machine-learning models using Google Earth Engine<sup>96</sup>. The models included 40 environmental layers (representing climate, soil and topographic features), eight human disturbance layers, and canopy cover as predictors. In random forest, unlike traditional regression, correlation among variables does not affect the model accuracy. Indeed, the ability to use many correlated predictors is one of the key benefits of machine-learning models<sup>97</sup>. When variables are correlated, the effect of these variables is ‘shared’ across the trees in the random forest. Because random forest does not estimate coefficients as in regression, this correlation does not hinder model fit or performance but, rather, complicates efforts to quantify variable importance, which is also shared across correlated variables (see Supplementary Fig. 14 for an evaluation of variable importance using a reduced, uncorrelated set of variables). Thus, including numerous variables, even if correlated, can improve the predictive power of the model to accurately quantify current carbon.

The model had the following form:

$$C_{Current} = \sum_{i=1}^n \alpha_i \left( \sum_{j=1}^m \beta_j H_{ju}^m a_r \right) \gamma^C \quad (3)$$

in which  $C_{Current}$  is the current forest tree carbon density in each pixel,  $(\sum_{i=1}^n \alpha_i \text{Env}_i)$  are the environmental variables,  $(\sum_{j=1}^m \beta_j \text{Human}_j)$  are the variables directly representing human disturbance (see ‘Environmental and human-disturbance variables’ section for details) and  $(\sum_{j=1}^m \beta_j \text{CanopyCover}_j)$  is the current canopy cover for the year 2010 (ref. <sup>95</sup>).

In a first step, we tested for the existence of spatial autocorrelation in model residuals, which can bias model-validation statistics<sup>98</sup>. This was done by calculating the Moran’s *I* index of the residuals from generalized additive models at different spatial scales (0–1,000 km). The Moran’s *I* indices indicated residual spatial autocorrelation at distances of up to 80 km for all GS models (Supplementary Fig. 15a–d). To avoid any bias introduced by the influence of spatial autocorrelation and correct for the uneven sampling across regions, we therefore applied bootstrapped spatial subsampling (100 iterations) to predict both current and potential tree carbon densities (see ‘Geospatial modelling of tree carbon potential’ section). The spatial subsampling was conducted by subsampling one random observation inside each 0.7-arcdegree (about 78-km) grid, resulting in approximately 4,500 observations for each subsample. Given that the model was run with 100 iterations, this resulted in a total of about 450,000 samples used to build our GS models. Parameter tuning for each model was performed through the grid-search procedure of Google Earth Engine<sup>96</sup> to explore the results of a suite of machine-learning models trained on the 49 covariates. For each of the models, we ran 48 discrete parameter sets covering the total grid space of 700 possible parameter combinations. Performance of each model was assessed using the coefficient of determination ( $R^2$ ) values from tenfold cross-validation (Supplementary Table 1) and we retained the best models from each bootstrapped spatial subsample. All  $R^2$  values reported throughout the manuscript represent the coefficient of determination relative to the 1:1 line of observed versus predicted values, which is equivalent to a standardized mean squared error.

As an alternative to testing whether spatial autocorrelation in model residuals affects model-validation statistics, we applied spatially buffered LOO-CV using the respective autocorrelation distances as buffer radii (Supplementary Table 1). In this procedure, each data point is predicted by a model that uses all data outside the buffer radius of the respective data point as training data. To run the LOO-CV, we used the hyperparameter settings of the best-performing random-forest model based on random tenfold cross-validation.

To create the final maps of current tree carbon density, we used an ensemble approach, whereby we averaged the global predictions from the 100 best random-forest models. By taking the average prediction across several models, ensemble methods minimize the influence of any single prediction, thereby stabilizing variation and minimizing bias that can otherwise arise from extrapolation or overfitting when using a single machine-learning model<sup>99</sup>. Geospatial mapping was also performed in Google Earth Engine<sup>96</sup>.

To account for tree carbon stored belowground as roots, we multiplied our aboveground tree carbon predictions by the pixel-level means or the upper and lower confidence bounds of the proportional contribution of root carbon, using a spatially explicit map of tree root mass fraction<sup>24</sup> (Supplementary Fig. 16). This map was derived from random-forest models based on 5,170 spatially explicit observations of tree biomass ratios between roots and shoots, covering all continents except Antarctica. Confidence ranges of the pixel-level root mass fraction estimates were based on sampling uncertainty, using a stratified bootstrapping procedure (see methods in ref. <sup>24</sup> for details).

To generate the final ground-sourced map of existing total living tree carbon (aboveground and belowground biomass in  $\text{t C ha}^{-1}$ ) at 30-arcsec resolution (about  $1 \text{ km}^2$ ), the total carbon stored at present in living trees ( $C_{\text{existing}}$ ) was then calculated as:

$$C_{\text{existing}} = \sum_{p=1}^m \left( D_{\text{existing}} \times \text{Area}_{\text{Pixel}} \right) \quad (4)$$

in which  $D_{\text{existing}}$  is the living tree carbon density in each pixel and  $\text{Area}_{\text{Pixel}}$  is the area of each pixel.

To evaluate the extent of model interpolation versus extrapolation, that is, how well our training data represent the full multivariate environmental covariate space, we performed an approach based on principal component analysis (PCA)<sup>100</sup>. To do so, we performed PCA on the 49 covariates represented in our training data, using the centring values, scaling values and eigenvectors to transform the 49 covariates into the same PCA spaces. Then we created convex hulls for each of the bivariate combinations from the top 19 principal components (which collectively covered more than 90% of the sample-space variation). Using the coordinates of these convex hulls, we classified whether each pixel falls within or outside each of these convex hulls. In total, 92% of the potential canopy cover area fell within  $\geq 95\%$  of the 171 PCA convex hull spaces computed from our training data (representing the range of environmental conditions in our training data), with most of the outliers existing in arid regions (Supplementary Fig. 17a).

We also tested how well the training data span the variation in the eight human-disturbance layers. In total, 90% of the potential canopy cover area fell within  $\geq 95\%$  of the ten PCA convex hull spaces computed from our training data (Supplementary Fig. 17b).

### Satellite-derived tree carbon density models

To compare and benchmark our ground-sourced tree carbon models against satellite-derived predictions, we used three state-of-the-art products of current aboveground forest biomass: (1) the latest ESA-CCI forest biomass map published in 2022 by the European Space Agency's Climate Change Initiative<sup>7,101</sup>; (2) a woody carbon stock map published in 2022 by Walker et al.<sup>2</sup>; and (3) a harmonized woody carbon stock map published in 2020 by Spawn et al.<sup>8</sup>.



The ESA-CCI map represents aboveground living tree biomass for the year 2010 and was produced using satellite data from ALOS-2/PALSAR-2 and a physical-based inversion model that estimates biomass from growing stock volume, wood density and biomass expansion factors, with bias adjustment following the validation framework in ref. <sup>7</sup>. The map was averaged from 100-m to 1-km<sup>2</sup> spatial resolution to match the resolution of the covariates. The 1-km<sup>2</sup> ESA-CCI map was assessed following the validation framework in ref. <sup>7</sup>, wherein map bias is predicted using a model-based approach based on global reference data. This step reduces mapping bias in areas with statistically significant prediction bias and particularly reduces the underestimation of biomass at high-biomass forests >350 t ha<sup>-1</sup>. The map comes with an uncertainty layer that accounts for spatially correlated errors during spatial averaging. To convert the living tree biomass estimates to carbon, we multiplied tree biomass with biome-specific wood carbon concentrations<sup>77</sup> (see Supplementary Table 5).

The Walker et al.<sup>2</sup> map represents woody aboveground carbon stocks for the year 2016 and was created by combining field measurements using airborne and spaceborne (NASA ICESat Geoscience Laser Altimeter System; GLAS) lidar data to yield spatially explicit estimates of aboveground biomass density at the GLAS footprint (about 60-m diameter) scale. Regression models were then used to relate the GLAS-based estimates of aboveground biomass to satellite imagery by the Moderate Resolution Imaging Spectroradiometer (MODIS), ultimately allowing to generate spatially explicit estimates of global aboveground biomass density at a resolution of approximately 500 m. The map was aggregated from 500-m to 1-km<sup>2</sup> spatial resolution to match the resolution of the covariates and came with an uncertainty layer that accounts for the spatially modelled error, representing the 95% quantile intervals generated by quantile regression forests<sup>2</sup>.

The harmonized map<sup>8</sup> represents aboveground woody carbon stocks for the year 2010 and was based on the GlobBiomass<sup>102</sup> map and refined using remotely sensed data for Africa<sup>103</sup> (see ref. <sup>8</sup> for details). The map was aggregated from 300-m to 1-km<sup>2</sup> spatial resolution to match the resolution of the covariates and came with an uncertainty layer that represents the uncertainty associated with the harmonization correction<sup>8</sup>.

## Geospatial modelling of tree carbon potential

To map the tree carbon potential in the hypothetical absence of humans, we developed four data-driven modelling approaches, with two sets of models developed from ground-sourced data (GS1 and GS2) and two from satellite-derived data (SD1 and SD2).

### GS models

After training and parameterizing the GS model of current tree carbon density using equation (3), we estimated the potential tree carbon density in forests that could exist in the absence of human disturbance by modifying this equation setting human-disturbance variables to zero and replacing existing canopy cover with potential canopy cover (GS1):

$$C_{\text{Potential}} = \sum_{i=1}^n \alpha_i \left( \prod_{j=1}^m \beta_j \left( \prod_{k=1}^p \gamma_k \right)^{\text{CanopyCover}} \right)$$

(5)

in which  $\left( \prod_{j=1}^m \beta_j \left( \prod_{k=1}^p \gamma_k \right)^{\text{CanopyCover}} \right)$  are the environmental variables,  $\left( \prod_{k=1}^p \gamma_k \right)^{\text{CanopyCover}}$  are the scaled human-disturbance variables set to zero and  $\left( \prod_{j=1}^m \beta_j \left( \prod_{k=1}^p \gamma_k \right)^{\text{CanopyCover}} \right)$  is the

current canopy cover<sup>95</sup>, which was replaced by potential canopy cover<sup>3</sup> after model training for the prediction of the total carbon potential. This allowed us to train the model including information on current (2010) forest canopy cover<sup>95</sup> and then to predict the tree carbon potential inside the potential canopy cover by replacing current canopy cover with the ‘natural’ canopy cover expected in the absence of humans<sup>3</sup>.

For the second GS model of potential tree carbon density (GS2), we included only data from regions with minimal human disturbance and used the 40 environmental covariates and canopy cover as predictors:

$$C_{\text{Potential}} = \sum_{i=1}^n \alpha_i \left( \mathbf{V}_i \mathbf{a}_i \mathbf{r}_i \right)^{\text{Env}} + \gamma \left( \mathbf{V} \mathbf{a} \mathbf{r} \right)^{\text{CanopyCover}} \quad (6)$$

in which  $\left( \mathbf{V}_i \mathbf{a}_i \mathbf{r}_i \right)^{\text{Env}}$  are the environmental variables and  $\left( \mathbf{V} \mathbf{a} \mathbf{r} \right)^{\text{CanopyCover}}$  is the current canopy cover<sup>95</sup>, which was replaced by potential canopy cover<sup>3</sup> after model training.

The GS2 model differs from the GS1 model in a reduced number of observations (only pixels with minimal human disturbance) and a reduced number of predictors (no human-disturbance variables). Regions with minimal human disturbance were defined as pixels located in: (1) a protected area, that is, strict nature reserve or wilderness area<sup>94</sup>; (2) intact forest, that is, contiguous forest with no remotely detected signs of human activity and a minimum area of 500 km<sup>2</sup> (ref. <sup>26</sup>); and/or (3) pixels in which human modification is <1% following ref. <sup>91</sup>. To minimize the influence of uneven distribution of observations and spatial autocorrelation on model training, we applied bootstrapped spatial subsampling (100 iterations), similar to the GS1 models, whereby—for each subsample—we randomly sampled one observation in each 0.25 arcdegree, which resulted in about 4,500 observations for each subsample.

As for the predictions of current tree carbon, for both the GS1 and GS2 models, we added root carbon<sup>24</sup> to generate maps representing total living tree carbon potential in the absence of human disturbance.

## SD models

The two types of SD model were run with the ESA-CCI<sup>18</sup>, Walker et al.<sup>2</sup> and harmonized maps<sup>8</sup> of current woody carbon as input data, resulting in six model combinations (two model types and three input datasets). As for the GS1 model, model structure and parameterization of the first SD model of potential living tree carbon (SD1) followed equation (5). Similarly, as for the GS2 model, the second SD model of potential tree carbon density (SD2) followed equation (6), and we trained the model using only biomass density information from areas with minimal human disturbance inside protected areas (strict nature reserve or wilderness area)<sup>94</sup> and/or intact forest landscapes<sup>26</sup>.

For both the SD1 and SD2 models, we conducted a bootstrap subsampling approach similar to the GS models, whereby about 4,500 sample points were drawn 100 times with replacement. For the SD1 model, observations were drawn randomly, given that the models were built from global maps for which data are distributed equally across all global forest areas. For the SD2 model, we applied spatial subsampling, randomly sampling one observation in each 1-arcdegree grid to account for the uneven distribution of areas with minimal human disturbance across the globe. For each subsample, we ran 48 discrete parameter sets covering the total grid space of 700 possible parameter combinations and kept the parameter set with the highest coefficient of determination ( $R^2$ ) based on tenfold cross-validation. To obtain the final predictions, we averaged the predictions from the 100 random-forest models.

To test for spatial autocorrelation in model residuals, we calculated the Moran's  $I$  index of the residuals from generalized additive models at different spatial scales (0–1,000 km) and, for each model, found spatial autocorrelation at distances of up to 550–900 km (Supplementary Fig. [15e–j](#)). To test for the effect of spatial autocorrelation on model validation statistics, we then ran LOO-CV models for each of the 100 bootstrapped subsamples, using the respective autocorrelation distances as buffer radii and the hyperparameter settings of the best-performing random-forest model based on random tenfold cross-validation (Supplementary Table [1](#)).

## **Adding dead wood, litter and soil carbon to scale living tree carbon to total ecosystem carbon**

### **Dead wood and litter biomass**

To account for forest carbon stored in dead wood and litter, we obtained forest-type-level carbon ratios from previous studies<sup>[19,104](#)</sup>. Means and confidence ranges of the ratios between dead wood and litter carbon and living tree carbon for tropical, temperate and boreal forests were calculated from forest-type estimates of total living biomass, dead wood and litter from Table S3 in ref. [19](#). Means and confidence ranges for dryland forests were calculated from Table 1 in ref. [104](#), using all sites for which data on plant aboveground and belowground biomass and litter was available. The ratios between dead wood and litter carbon and living tree carbon were 22% (95% confidence range = 15–33%), 33% (30–37%), 80% (68–94%) and 21% (2–40%) for tropical, temperate, boreal and dryland forests, respectively. We then multiplied pixel-level living tree carbon values by these percentages to estimate the means and confidence bounds of dead wood and litter carbon for each pixel (Table [1](#)).

### **Soil carbon**

Using the soil potential map ref. [23](#), which represents the effects of anthropogenic land-use and land-cover changes on soil organic carbon in the top 2 m (ref. [23](#)) over the past 12,000 years, we extracted estimates of soil carbon potential in the absence of humans (difference between soil carbon 10,000 BC and current soil carbon) for all pixels that would naturally support trees (potential canopy cover<sup>3</sup>  $\geq 10\%$ ; Table [1](#)). Associated spatial-prediction uncertainties (absolute errors) were calculated by fitting a spatial-prediction model to the prediction residuals of the cross-validated original model and applying this error model over the whole area of interest<sup>[23](#)</sup>.

### **Model uncertainty**

For each of the GS and SD models, the 100 bootstrapped models of aboveground tree carbon potential were used to calculate per-pixel coefficient-of-variation values (standard deviation divided by the mean predicted value) as a measure of sampling uncertainty (hereafter referred to as bootstrap prediction uncertainty; Supplementary Figs. [1](#) and [2](#)). Using the bootstrapped models, we also calculated 95% confidence ranges of estimates, allowing us to represent uncertainty ranges for each aboveground carbon model. To represent the uncertainty in canopy cover of the forest inventory plots, we ran the GS1 and GS2 models for both the upper and lower canopy cover estimates. To represent data uncertainty of the SD models, we ran the SD1 and SD2 models using three different input datasets (ESA-CCI<sup>[18](#)</sup>, Walker et al.<sup>[2](#)</sup> and harmonized biomass maps<sup>[8](#)</sup>). Uncertainty in belowground tree carbon was derived by multiplying the upper and lower confidence ranges of aboveground tree carbon values with the upper and lower confidence ranges of spatially explicit root mass fractions<sup>[24](#)</sup>, thus representing uncertainties in both root mass fraction and aboveground biomass. Using the entire confidence range of total (aboveground and belowground) living tree carbon, including sampling and data uncertainty, we then calculated the uncertainty in dead wood and litter biomass by multiplying the upper and lower confidence ranges of total living tree carbon values with the upper and lower confidence ranges of the forest-type-specific ratios between dead wood and litter carbon and living tree carbon (see 'Dead wood and litter biomass' section). Dead wood and litter biomass uncertainty was thus the result of uncertainties in both dead wood and

litter-to-tree biomass ratios and tree biomass. Spatially explicit uncertainties in soil carbon potential were derived from maps of absolute errors in organic carbon density at 0–200 cm soil depth provided in ref. [23](#). Propagation of uncertainty was done by summing all individual uncertainties and assuming that they are uncorrelated.

To quantify the relative contribution of the different sources of uncertainty to the overall uncertainty in our models, we divided the absolute uncertainty of each uncertainty type by the sum of all uncertainties (Fig. [4](#)). This partitioning allows for relative comparison in uncertainty among sources, but otherwise does not necessarily reflect total model uncertainty owing to overlap and correlation across sources of uncertainty.

## Carbon potential partitioning

On the basis of our carbon models, we could generate estimates of (1) the relative contribution of forest degradation (that is, reduced tree carbon within the existing canopy cover) to the difference between current and potential carbon stocks (hereafter referred to as conservation potential) and (2) the relative contribution of deforestation (that is, declines in canopy cover owing to land-use change in areas that would naturally support trees) to the difference between current and potential carbon stocks (hereafter referred to as restoration potential). Specifically, to estimate the relative contribution of forest degradation (conservation potential) and deforestation (restoration potential) to the difference between current and potential carbon stocks, we first attributed the proportional amount of the extra carbon predicted by our model to the extra canopy cover expected in the absence of humans. For example, for a pixel in which potential canopy cover is twice as high as current canopy cover and for which the predicted potential carbon is also twice as high as current carbon, the extra carbon is attributed only to the difference in canopy cover (restoration potential). For pixels in which the potential increase in tree carbon exceeded the proportional increase in canopy cover, the carbon potential fraction exceeding the proportional increase in canopy cover was equally distributed across the total potential canopy cover of the pixel. For pixels in which potential canopy cover was the same as current canopy cover, we attributed the difference between current and potential tree carbon stocks to forest degradation (conservation potential).

Throughout the text, we refer to conservation potential as the difference between current and potential carbon in existing forests, which was computed by subtracting the carbon stored at present inside existing forests from the expected carbon in these forests in the absence of human disturbance. We refer to restoration potential as the difference between current and potential carbon outside existing forests, which was estimated as the expected carbon in non-forest areas that would naturally support trees in the absence of human disturbances<sup>3</sup>. Finally, the total difference between current and potential carbon refers to the sum of the conservation and restoration potentials (Figs. [3](#) and [5](#)).

To estimate the existing and potential carbon within biomes (Supplementary Table [2](#)), forest classes (tropical, temperate, boreal and dryland; Supplementary Table [3](#)) and countries (Fig. [5e](#)), we used the World Wide Fund for Nature (WWF) biome definitions<sup>71</sup> and country boundaries from the world boundary map<sup>105</sup>. Forests were classified into four broad categories (tropical, temperate, boreal and dryland)<sup>71</sup>. Tropical forest includes six biomes: tropical and subtropical moist broadleaf forest, tropical and subtropical dry broadleaf forest, tropical and subtropical coniferous forest, tropical and subtropical grassland, savannah and shrubland, flooded grassland and savannah, and mangroves; temperate forest includes four biomes: temperate broadleaf and mixed forest, conifer forest, temperate grassland, savannah and shrubland, and montane grassland and shrubland; boreal forest includes two biomes: boreal forest/taiga and tundra; dryland refers to the two biomes Mediterranean forest, woodland and scrub, and desert and xeric shrubland.

To partition potential carbon stocks into different land-cover types, we integrated four land-cover maps<sup>88,89,90,106</sup>, providing information on the relative area of a pixel that is covered by urban area, cropland, permanent pasture, rangeland, urban area, forest, water body and ice and snow. The difference between current and potential tree carbon stocks predicted by our models was then allocated to the land-

cover types urban area, cropland, permanent pasture, rangeland, urban area and forest in proportion to their relative pixel coverage. Low-human-pressure land was defined as the proportion of a non-forest pixel (<10% canopy cover) that could not be attributed to pasture, rangeland, cropland, urban area, water body or ice and snow. All areas in forest pixels that could not be attributed to pasture, rangeland, cropland, urban area, water body or ice and snow were attributed to forest. Global information on forest plantations came from ref. <sup>28</sup> and we only considered plantations if they covered more than 10% of the canopy area in a pixel.

## Meta-analysis of previous studies on the global carbon potential

To gain insight into the forest carbon potential estimated by previous studies, we reviewed publications that applied diverse approaches to quantify the potential carbon storage capacity of global forests. These studies fall into two types of estimate. The first type included studies reporting the total carbon that could be stored in global forests in the absence of human activities (Fig. [3b](#)). The second type encompassed studies reporting the extra potential carbon that could be stored in the global forests, that is, the difference between current and potential carbon stocks (Fig. [3d](#)). In total, we found 20 estimates of the total carbon potential and nine estimates of the difference between current and potential carbon stocks. These estimates were derived from four different approaches: inventory-based empirical estimates, mechanistic models, ensemble models and data-driven models. Inventory-based estimates comprise studies that estimated the global carbon potential from maximum forest carbon densities observed in climate zones or ecoregions based on inventory data<sup>1,55,58</sup>. Mechanistic-model estimates included studies that used mechanistic models, such as Earth system models, to estimate the carbon potential of global forests<sup>64,67</sup>. Ensemble-model estimates consisted of studies that used a variety of existing biomass maps to estimate the global carbon potential from maximum forest carbon densities in climate zones or ecoregions<sup>4</sup>. Last, the data-driven model category encompassed studies that used extensive global carbon density observations to train global models based on environmental covariates<sup>2</sup>. References to the studies included in this meta-analysis are shown in the legend of Fig. [3](#) and Supplementary Table [7](#).

All analyses were conducted in Google Earth Engine<sup>96</sup> and R (v. 3.6.3)<sup>107</sup>. All figures were created in R (v. 3.6.3)<sup>107</sup>.

## Data availability

Data and code are available at GitHub: <https://doi.org/10.5281/zenodo.10021968>.

## References

1. Pan, Y., Birdsey, R. A., Phillips, O. L. & Jackson, R. B. The structure, distribution, and biomass of the world's forests. *Annu. Rev. Ecol. Evol. Syst.* **44**, 593–622 (2013). [Article](#) [Google Scholar](#)
2. Walker, W. et al. The global potential for increased storage of carbon on land. *Proc. Natl Acad. Sci.* **119**, e2111312119 (2022). [Article](#) [CAS](#) [PubMed](#) [PubMed Central](#) [Google Scholar](#)
3. Bastin, J. F. et al. The global tree restoration potential. *Science* **364**, 76–79 (2019). [Article](#) [ADS](#) [Google Scholar](#)
4. Erb, K.-H. et al. Unexpectedly large impact of forest management and grazing on global vegetation biomass. *Nature* **553**, 73–76 (2018). [Article](#) [ADS](#) [CAS](#) [PubMed](#) [Google Scholar](#)
5. Roebroek, C. T. J., Duveiller, G., Seneviratne, S. I., Davin, E. L. & Cescatt, A. Releasing global forests from human management: How much more carbon could be stored? *Science* **380**, 749–753 (2023). [Article](#) [ADS](#) [CAS](#) [Google Scholar](#)
6. Liang, J. et al. Positive biodiversity-productivity relationship predominant in global forests. *Science* **354**, aaf8957 (2016). [Article](#) [Google Scholar](#)
7. Araza, A. et al. A comprehensive framework for assessing the accuracy and uncertainty of global above-ground biomass maps. *Remote Sens. Environ.* **272**, 112917 (2022). [Article](#) [Google Scholar](#)

8. Spawn, S. A., Sullivan, C. C., Lark, T. J. & Gibbs, H. K. Harmonized global maps of above and belowground biomass carbon density in the year 2010. *Sci. Data* **7**, 112 (2020). [Article](#) [PubMed Central](#) [Google Scholar](#)
9. Lewis, S. L., Wheeler, C. E., Mitchard, E. T. A. & Koch, A. Restoring natural forests is the best way to remove atmospheric carbon. *Nature* **568**, 25–28 (2019). [Article](#) [ADS](#) [CAS](#) [PubMed](#) [Google Scholar](#)
10. Pecl, G. T. et al. Biodiversity redistribution under climate change: impacts on ecosystems and human well-being. *Science* **355**, eaai9214 (2017). [Article](#) [PubMed](#) [Google Scholar](#)
11. Intergovernmental Panel on Climate Change (IPCC). *Global Warming of 1.5°C. An IPCC Special Report on the Impacts of Global Warming of 1.5°C Above Pre-industrial Levels and Related Global Greenhouse Gas Emission Pathways, in the Context of Strengthening the Global Response to the Threat of Climate Change* (Cambridge Univ. Press, 2018).
12. Food and Agriculture Organization of the United Nations (FAO). *In Brief to The State of the World's Forests 2022. Forest Pathways for Green Recovery and Building Inclusive, Resilient and Sustainable Economies* (FAO, 2022).
13. Crowther, T. W. et al. Mapping tree density at a global scale. *Nature* **525**, 201–205 (2015). [Article](#) [ADS](#) [CAS](#) [PubMed](#) [Google Scholar](#)
14. Olagunju, T. E. Impacts of human-induced deforestation, forest degradation and fragmentation on food security. *N. Y. Sci. J.* **8**, 4–16 (2015). [Google Scholar](#)
15. Friedlingstein, P. et al. Global carbon budget 2020. *Earth Syst. Sci. Data* **12**, 3269–3340 (2020). [Article](#) [ADS](#) [Google Scholar](#)
16. Mrema, E. M. et al. Ten years to restore a planet. *One Earth* **3**, 647–652 (2020). [Article](#) [ADS](#) [Google Scholar](#)
17. Convention on Biological Diversity (CBD). *Kunming-Montreal Global Biodiversity Framework* (UN Environment Programme, 2022).
18. 26th UN Climate Change Conference of the Parties (COP26). *Glasgow Leaders' Declaration on Forests and Land Use* (United Nations Climate Change, 2021).
19. Pan, Y. et al. A large and persistent carbon sink in the world's forests. *Science* **333**, 988–993 (2011). [Article](#) [ADS](#) [CAS](#) [PubMed](#) [Google Scholar](#)
20. Lewis, S. L., Mitchard, E. T. A., Prentice, C., Maslin, M. & Poulter, B. Comment on “The global tree restoration potential”. *Science* **366**, eaaz0388 (2019). [Article](#) [CAS](#) [PubMed](#) [Google Scholar](#)
21. Veldman, J. W. et al. Comment on “The global tree restoration potential”. *Science* **366**, eaay7976 (2019). [Article](#) [PubMed](#) [Google Scholar](#)
22. Scott, J. M. et al. Nature reserves: do they capture the full range of America's biological diversity? *Ecol. Appl.* **11**, 999–1007 (2001). [Article](#) [Google Scholar](#)
23. Sanderman, J., Hengl, T. & Fiske, G. J. Soil carbon debt of 12,000 years of human land use. *Proc. Natl Acad. Sci.* **114**, 9575–9580 (2017). [Article](#) [ADS](#) [CAS](#) [PubMed](#) [PubMed Central](#) [Google Scholar](#)
24. Ma, H. et al. The global distribution and environmental drivers of aboveground versus belowground plant biomass. *Nat. Ecol. Evol.* **5**, 1110–1122 (2021). [Article](#) [Google Scholar](#)
25. Avitabile, V. et al. An integrated pan-tropical biomass map using multiple reference datasets. *Glob. Change Biol.* **22**, 1406–1420 (2016). [Article](#) [ADS](#) [Google Scholar](#)
26. Potapov, P. et al. The last frontiers of wilderness: tracking loss of intact forest landscapes from 2000 to 2013. *Sci. Adv.* **3**, e1600821 (2017). [Article](#) [ADS](#) [PubMed](#) [PubMed Central](#) [Google Scholar](#)
27. Skytt, T., Englund, G. & Jonsson, B. Climate mitigation forestry—temporal trade-offs. *Environ. Res. Lett.* **16**, 114037 (2021). [Article](#) [ADS](#) [CAS](#) [Google Scholar](#)
28. Du, Z. et al. A global map of planting years of plantations. *Sci. Data* **9**, 141 (2022). [Article](#) [PubMed](#) [PubMed Central](#) [Google Scholar](#)
29. Xu, L. et al. Changes in global terrestrial live biomass over the 21st century. *Sci. Adv.* **7**, eabe9829 (2021). [Article](#) [ADS](#) [CAS](#) [PubMed](#) [Google Scholar](#)
30. Portmann, R. et al. Global forestation and deforestation affect remote climate via adjusted atmosphere and ocean circulation. *Nat. Commun.* **13**, 5569 (2022). [Article](#) [ADS](#) [CAS](#) [PubMed](#) [PubMed Central](#) [Google Scholar](#)

31. Rohatyn, S., Yakir, D., Rotenberg, E. & Carmel, Y. Limited climate change mitigation potential through forestation of the vast dryland regions. *Science* **377**, 1436–1439 (2022).  
[Article](#) [ADS](#) [CAS](#) [PubMed](#) [Google Scholar](#)
32. Alkama, R. & Cescatti, A. Biophysical climate impacts of recent changes in global forest cover. *Science* **351**, 600–604 (2016). [Article](#) [ADS](#) [CAS](#) [PubMed](#) [Google Scholar](#)
33. Nabuurs, G.-J. et al. in *IPCC, 2022: Climate Change 2022: Mitigation of Climate Change. Contribution of Working Group III to the Sixth Assessment Report of the Intergovernmental Panel on Climate Change* (eds Shukla, P. R. et al.) Ch. 7 (Cambridge Univ. Press, 2023).
34. Cassidy, E. S., West, P. C., Gerber, J. S. & Foley, J. A. Redefining agricultural yields: from tonnes to people nourished per hectare. *Environ. Res. Lett.* **8**, 034015 (2013).  
[Article](#) [ADS](#) [Google Scholar](#)
35. Schiermeir, Q. Eat less meat: UN climate-change panel tackles diets. *Nature* **572**, 291–292 (2019).  
[Article](#) [ADS](#) [Google Scholar](#)
36. Hayek, M. N., Harwatt, H., Ripple, W. J. & Mueller, N. D. The carbon opportunity cost of animal-sourced food production on land. *Nat. Sustain.* **4**, 21–24 (2021). [Article](#) [Google Scholar](#)
37. Dubayah, R. O. et al. GEDI L4A Footprint Level Aboveground Biomass Density, Version 1. <https://doi.org/10.3334/ORNLDAAAC/1907> (ORNL DAAC, 2021).
38. de Lima, R. A. F. et al. Making forest data fair and open. *Nat. Ecol. Evol.* **6**, 656–658 (2022).  
[Article](#) [PubMed](#) [Google Scholar](#)
39. Liang, J. & Gamarra, J. G. P. The importance of sharing global forest data in a world of crises. *Sci. Data* **7**, 424 (2020). [Article](#) [PubMed](#) [PubMed Central](#) [Google Scholar](#)
40. Staver, A. C., Archibald, S. & Levin, S. A. The global extent and determinants of savanna and forest as alternative biome states. *Science* **334**, 230–232 (2011).  
[Article](#) [ADS](#) [CAS](#) [PubMed](#) [MATH](#) [Google Scholar](#)
41. McRoberts, R. E. et al. Local validation of global biomass maps. *Int. J. Appl. Earth Obs. Geoinf.* **83**, 101931 (2019). [Google Scholar](#)
42. Austin, K. G. et al. The economic costs of planting, preserving, and managing the world’s forests to mitigate climate change. *Nat. Commun.* **11**, 5946 (2020).  
[Article](#) [ADS](#) [CAS](#) [PubMed](#) [PubMed Central](#) [Google Scholar](#)
43. Cook-Patton, S. C. et al. Mapping carbon accumulation potential from global natural forest regrowth. *Nature* **585**, 545–550 (2020). [Article](#) [ADS](#) [CAS](#) [PubMed](#) [Google Scholar](#)
44. Aleixo, I. et al. Amazonian rainforest tree mortality driven by climate and functional traits. *Nat. Clim. Change* **9**, 384–388 (2019). [Article](#) [ADS](#) [Google Scholar](#)
45. Pellegrini, A. F. A. et al. Fire frequency drives decadal changes in soil carbon and nitrogen and ecosystem productivity. *Nature* **553**, 194–198 (2018). [Article](#) [ADS](#) [CAS](#) [PubMed](#) [Google Scholar](#)
46. Zhu, Z. et al. Greening of the Earth and its drivers. *Nat. Clim. Change* **6**, 791–795 (2016).  
[Article](#) [ADS](#) [CAS](#) [Google Scholar](#)
47. Wiebel, H., Moss, K. & Neagle, E. From Pledges to Action: What’s Next for COP26 Corporate Commitments. *World Resources Institute* <https://www.wri.org/insights/pledges-action-whats-next-cop26-corporate-commitments?auHash=tpyB7H-JVwZWeGWd-IP2K9Xs0ZcTfHmlcAFGIlQ5DM> (2021).
48. 26th UN Climate Change Conference of the Parties (COP26). *Financial Sector Commitment Letter on Eliminating Commodity-driven Deforestation* (United Nations Climate Change, 2021).
49. Veryard, R. et al. Positive effects of tree diversity on tropical forest restoration in a field-scale experiment. *Sci. Adv.* **9**, eadf0938 (2023). [Article](#) [PubMed](#) [Google Scholar](#)
50. Philipson, C. D. et al. Active restoration accelerates the carbon recovery of human-modified tropical forests. *Science*. **369**, 838–841 (2020). [Article](#) [ADS](#) [CAS](#) [PubMed](#) [Google Scholar](#)
51. Lambin, E. F. & Meyfroidt, P. Global land use change, economic globalization, and the looming land scarcity. *Proc. Natl Acad. Sci. USA*. **108**, 3465–3472 (2011).  
[Article](#) [ADS](#) [CAS](#) [PubMed](#) [PubMed Central](#) [Google Scholar](#)
52. Crowther, T. W. et al. Restor: transparency and connectivity for the global environmental movement. *One Earth* **5**, 476–481 (2022). [Article](#) [ADS](#) [Google Scholar](#)
53. Roy, J., Mooney, H. A. & Saugier, B. *Terrestrial Global Productivity* (Elsevier, 2001).

54. Siegenthaler, U. & Sarmiento, J. L. Atmospheric carbon dioxide and the ocean. *Nature* **365**, 119–125 (1993). [Article](#) [ADS](#) [CAS](#) [Google Scholar](#)
55. Bazilevich, N. I., Rodin, L. Y. & Rozov, N. N. Geographical aspects of biological productivity. *Sov. Geogr.* **12**, 293–317 (1971). [Article](#) [Google Scholar](#)
56. Olson, J. S., Watts, J. A. & Allison, L. J. *Carbon in Live Vegetation of Major World Ecosystems* (Oak Ridge National Laboratory, 1983).
57. Ruesch, A. & Gibbs, H. K. *New IPCC Tier-1 global biomass carbon map for the year 2000* (U.S. Department of Energy, 2008).
58. Ajtay, G. L. Terrestrial primary production and phytomass. *Glob. Carbon cycle* 129–181 (1979).
59. Food and Agriculture Organization of the United Nations (FAO). *Global Forest Resources Assessment 2010* (FAO, 2010).
60. Adams, J. M., Faure, H., Faure-Denard, L., McGlade, J. M. & Woodward, F. I. Increases in terrestrial carbon storage from the Last Glacial Maximum to the present. *Nature* **348**, 711–714 (1990). [Article](#) [ADS](#) [CAS](#) [Google Scholar](#)
61. West, P. C. et al. Trading carbon for food: global comparison of carbon stocks vs. crop yields on agricultural land. *Proc. Natl Acad. Sci.* **107**, 19645–19648 (2010). [Article](#) [ADS](#) [CAS](#) [PubMed](#) [PubMed Central](#) [Google Scholar](#)
62. Kaplan, J. O. et al. Holocene carbon emissions as a result of anthropogenic land cover change. *Holocene* **21**, 775–791 (2011). [Article](#) [ADS](#) [Google Scholar](#)
63. Shevliakova, E. et al. Carbon cycling under 300 years of land use change: importance of the secondary vegetation sink. *Glob. Biogeochem. Cycles* **23**, GB2022 (2009). [Article](#) [ADS](#) [Google Scholar](#)
64. Hurtt, G. C. et al. Harmonization of land-use scenarios for the period 1500–2100: 600 years of global gridded annual land-use transitions, wood harvest, and resulting secondary lands. *Clim. Change* **109**, 117–161 (2011). [Article](#) [ADS](#) [Google Scholar](#)
65. Krinner, G. et al. A dynamic global vegetation model for studies of the coupled atmosphere-biosphere system. *Glob. Biogeochem. Cycles* **19**, GB1015 (2005). [Article](#) [ADS](#) [Google Scholar](#)
66. Sitch, S. et al. Evaluation of ecosystem dynamics, plant geography and terrestrial carbon cycling in the LPJ dynamic global vegetation model. *Glob. Change Biol.* **9**, 161–185 (2003). [Article](#) [ADS](#) [Google Scholar](#)
67. Prentice, I. C., Harrison, S. P. & Bartlein, P. J. Global vegetation and terrestrial carbon cycle changes after the last ice age. *New Phytol.* **189**, 988–998 (2011). [Article](#) [CAS](#) [PubMed](#) [Google Scholar](#)
68. Leys, C., Ley, C., Klein, O., Bernard, P. & Licata, L. Detecting outliers: do not use standard deviation around the mean, use absolute deviation around the median. *J. Exp. Soc. Psychol.* **49**, 764–766 (2013). [Article](#) [Google Scholar](#)
69. Henry, M. et al. GlobAllomeTree: international platform for tree allometric equations to support volume, biomass and carbon assessment. *Iforest* **6**, 326–330 (2013). [Article](#) [Google Scholar](#)
70. Jenkins, J. C., Chojnacky, D. C., Heath, L. S. & Birdsey, R. A. National-scale biomass estimators for United States tree species. *For. Sci.* **49**, 12–35 (2003). [Google Scholar](#)
71. Olson, D. M. et al. Terrestrial ecoregions of the world: a new map of life on Earth: a new global map of terrestrial ecoregions provides an innovative tool for conserving biodiversity. *Bioscience* **51**, 933–938 (2001). [Article](#) [Google Scholar](#)
72. Chave, J. et al. Improved allometric models to estimate the aboveground biomass of tropical trees. *Glob. Change Biol.* **20**, 3177–3190 (2014). [Article](#) [ADS](#) [Google Scholar](#)
73. Réjou-Méchain, M., Tanguy, A., Piponiot, C., Chave, J. & Hérault, B. BIOMASS: an R package for estimating above-ground biomass and its uncertainty in tropical forests. *Methods Ecol. Evol.* **8**, 1163–1167 (2017). [Article](#) [Google Scholar](#)
74. Chave, J. et al. Towards a worldwide wood economics spectrum. *Ecol. Lett.* **12**, 351–366 (2009). [Article](#) [Google Scholar](#)
75. Falster, D. S. et al. BAAD: a Biomass And Allometry Database for woody plants. *Ecology* **96**, 1445 (2015). [Article](#) [Google Scholar](#)
76. Boyle, B. et al. The Taxonomic Name Resolution Service: an online tool for automated standardization of plant names. *BMC Bioinform.* **14**, 16 (2013). [Article](#) [Google Scholar](#)



77. Martin, A. R., Doraisami, M. & Thomas, S. C. Global patterns in wood carbon concentration across the world's trees and forests. *Nat. Geosci.* **11**, 915–920 (2018). [Article](#) [ADS](#) [CAS](#) [Google Scholar](#)
78. Keith, H., Mackey, B. G. & Lindenmayer, D. B. Re-evaluation of forest biomass carbon stocks and lessons from the world's most carbon-dense forests. *Proc. Natl Acad. Sci.* **106**, 11635–11640 (2009). [Article](#) [ADS](#) [CAS](#) [PubMed](#) [PubMed Central](#) [Google Scholar](#)
79. Li, S. et al. Deep learning enables image-based tree counting, crown segmentation, and height prediction at national scale. *PNAS Nexus* **2**, pgad076 (2023). [Article](#) [PubMed Central](#) [Google Scholar](#)
80. Karger, D. N. et al. Climatologies at high resolution for the earth's land surface areas. *Sci. Data* **4**, 170122 (2017). [Article](#) [PubMed](#) [PubMed Central](#) [Google Scholar](#)
81. Amatulli, G. et al. A suite of global, cross-scale topographic variables for environmental and biodiversity modeling. *Sci. Data* **5**, 180040 (2018). [Article](#) [PubMed](#) [PubMed Central](#) [Google Scholar](#)
82. Wilson, A. M. & Jetz, W. Remotely sensed high-resolution global cloud dynamics for predicting ecosystem and biodiversity distributions. *PLoS Biol.* **14**, e1002415 (2016). [Article](#) [PubMed](#) [PubMed Central](#) [Google Scholar](#)
83. Fan, Y., Li, H. & Miguez-Macho, G. Global patterns of groundwater table depth. *Science* **339**, 940–943 (2013). [Article](#) [ADS](#) [CAS](#) [PubMed](#) [Google Scholar](#)
84. Fick, S. E. & Hijmans, R. J. WorldClim 2: new 1-km spatial resolution climate surfaces for global land areas. *Int. J. Climatol.* **37**, 4302–4315 (2017). [Article](#) [Google Scholar](#)
85. Shangguan, W., Hengl, T., de Jesus, J. M., Yuan, H. & Dai, Y. Mapping the global depth to bedrock for land surface modeling. *J. Adv. Model. Earth Syst.* **9**, 65–88 (2017). [Article](#) [ADS](#) [Google Scholar](#)
86. Trabucco, A. & Zomer, R. J. *Global Soil Water Balance Geospatial Database*. (CGIAR Consortium for Spatial Information, 2010); <https://csidotinfo.wordpress.com/data/global-high-resolution-soil-water-balance/>.
87. Zomer, R. J., Trabucco, A., Bossio, D. A. & Verchot, L. V. Climate change mitigation: a spatial analysis of global land suitability for clean development mechanism afforestation and reforestation. *Agric. Ecosyst. Environ.* **126**, 67–80 (2008). [Article](#) [Google Scholar](#)
88. Tuanmu, M.-N. & Jetz, W. A global 1-km consensus land-cover product for biodiversity and ecosystem modelling. *Glob. Ecol. Biogeogr.* **23**, 1031–1045 (2014). [Article](#) [Google Scholar](#)
89. Klein Goldewijk, K., Beusen, A. & Janssen, P. Long-term dynamic modeling of global population and built-up area in a spatially explicit way: HYDE 3.1. *Holocene* **20**, 565–573 (2010). [Article](#) [ADS](#) [Google Scholar](#)
90. Klein Goldewijk, K., Beusen, A., Van Drecht, G. & De Vos, M. The HYDE 3.1 spatially explicit database of human-induced global land-use change over the past 12,000 years. *Glob. Ecol. Biogeogr.* **20**, 73–86 (2011). [Article](#) [Google Scholar](#)
91. Kennedy, C. M., Oakleaf, J. R., Theobald, D. M., Baruch-Mordo, S. & Kiesecker, J. Managing the middle: a shift in conservation priorities based on the global human modification gradient. *Glob. Change Biol.* **25**, 811–826 (2019). [Article](#) [ADS](#) [Google Scholar](#)
92. United Nations Environment Programme World Conservation Monitoring Centre (UNEP-WCMC), International Union for Conservation of Nature (IUCN) World Commission on Protected Areas (WCPA). Protected Planet: the World Database on Protected Areas (WDPA). <https://www.protectedplanet.net/en> (2011).
93. United Nations Environment Programme World Conservation Monitoring Centre (UNEP-WCMC), International Union for Conservation of Nature (IUCN) World Commission on Protected Areas (WCPA). Protected Planet: the World Database on Protected Areas (WDPA) <https://www.protectedplanet.net/en> (2018).
94. Jones, K. R. et al. One-third of global protected land is under intense human pressure. *Science* **360**, 788–791 (2018). [Article](#) [CAS](#) [PubMed](#) [Google Scholar](#)
95. Hansen, M. C. et al. High-resolution global maps of 21st-century forest cover change. *Science* **342**, 850–853 (2013). [Article](#) [ADS](#) [CAS](#) [PubMed](#) [Google Scholar](#)

96. Gorelick, N. et al. Google Earth Engine: planetary-scale geospatial analysis for everyone. *Remote Sens. Environ.* **202**, 18–27 (2017). [Article](#) [ADS](#) [Google Scholar](#)
97. Strobl, C., Boulesteix, A. L., Kneib, T., Augustin, T. & Zeileis, A. Conditional variable importance for random forests. *BMC Bioinform.* **9**, 307 (2008). [Article](#) [Google Scholar](#)
98. Ploton, P. et al. Spatial validation reveals poor predictive performance of large-scale ecological mapping models. *Nat. Commun.* **11**, 4540 (2020). [Article](#) [ADS](#) [CAS](#) [PubMed](#) [PubMed Central](#) [Google Scholar](#)
99. Sagi, O. & Rokach, L. Ensemble learning: a survey. *Wiley Interdiscip. Rev. Data Min. Knowl. Discov.* **8**, e1249 (2018). [Article](#) [Google Scholar](#)
100. van den Hoogen, J. et al. Soil nematode abundance and functional group composition at a global scale. *Nature* **572**, 194–198 (2019). [Article](#) [ADS](#) [PubMed](#) [Google Scholar](#)
101. Santoro, M. & Cartus, O. ESA Biomass Climate Change Initiative (Biomass\_cci): Global datasets of forest above-ground biomass for the years 2010, 2017 and 2018, v3. NERC EDS Centre for Environmental Data Analysis. <https://doi.org/10.5285/5f331c418e9f4935b8eb1b836f8a91b8> (2021).
102. Santoro, M. GlobBiomass—global datasets of forest biomass. PANGAEA. <https://doi.org/10.1594/PANGAEA.894711> (2018).
103. Bouvet, A. et al. An above-ground biomass map of African savannahs and woodlands at 25 m resolution derived from ALOS PALSAR. *Remote Sens. Environ.* **206**, 156–173 (2018). [Article](#) [ADS](#) [Google Scholar](#)
104. Grace, J., Jose, J. S., Meir, P., Miranda, H. S. & Montes, R. A. Productivity and carbon fluxes of tropical savannas. *J. Biogeogr.* **33**, 387–400 (2006). [Article](#) [Google Scholar](#)
105. Sandvik, B. World Borders Dataset. Thematic Mapping API. [https://thematicmapping.org/downloads/world\\_borders.php](https://thematicmapping.org/downloads/world_borders.php) (2009).
106. Tuanmu, M.-N. & Jetz, W. A global, remote sensing-based characterization of terrestrial habitat heterogeneity for biodiversity and ecosystem modelling. *Glob. Ecol. Biogeogr.* **24**, 1329–1339 (2015). [Article](#) [Google Scholar](#)
107. R Core Team. *R: A Language and Environment for Statistical Computing*. <http://www.R-project.org/> (R Foundation for Statistical Computing, 2020). [Download references](#)

## Acknowledgements

We sincerely acknowledge S. Lewis and D. S. Maynard for their valuable suggestions and contributions to this project. This work was supported by grants to L. Mo from the China Scholarship Council, C.M.Z. from the SNF Ambizione Fellowship programme (#PZ00P3\_193646) and T.W.C. from DOB Ecology and the Bernina Foundation. We thank RESTOR ([www.restor.eco](http://www.restor.eco)) for providing data and Google Earth Engine for analytical support. This study was in part supported by the ESA Climate Change Initiative Biomass project funded by the European Space Agency (4000123662/18/I-NB) and the Open-Earth-Monitor Project funded by the European Union. The GEO-TREES initiative (<https://geo-trees.org/>) contributed plot data to this study, supported by the European Space Agency, IIASA, RAINFOR, AfriTRON, ForestPlots.net, ForestGEO, Smithsonian Tropical Research Institute, TmFO, Université de Toulouse, University of Leeds, UCL and CIRAD. The French National Forest Inventory data were downloaded by the Global Forest Biodiversity initiative (GFBI) at <https://inventaire-forestier.ign.fr/dataifn/>; the Italian Forest Inventory data were downloaded by the GFBI at <https://inventarioforestale.org/>. O. Bouriaud acknowledges funding from the Romanian National Council for Higher Education Funding, CNFIS, project number CNFIS-FDI-2023-F-0579. J.-C.S. considers this work a contribution to Center for Ecological Dynamics in a Novel Biosphere (ECONOVO), funded by the Danish National Research Foundation (grant D NRF173) and his VILLUM Investigator project ‘Biodiversity Dynamics in a Changing World’, funded by VILLUM FONDEN (grant 16549). ForestPlots.net and RAINFOR contributions led by O.L.P. were supported by several sources, including the Royal Society (GCRF International Collaboration Award ICA\R1\180100), the European Research Council (Advanced Grant 291585), the UK Natural Environment Research Council (NE/B504630/1, NE/D010306/1, NE/G012067/1, NE/D005590/1, NE/I028122/1, NE/S011811/1) and the Gordon and

Betty Moore Foundation. The exploratory plots of FunDivEUROPE were established through funding from the European Union Seventh Framework Programme FP7/2007-2013 under grant 265171. T.M.F. was supported by a Czech Science Foundation Standard Grant (21-06446 S). We thank the FCT - Portuguese Foundation for Science and Technology, project UIDB/04033/2020 and ICNF-Instituto da Conservação da Natureza, Portugal, National Forest Inventory for support. This study used GFBI plot data originally collected in Brazil with funding by Conselho Nacional de Desenvolvimento Científico e Tecnológico (CNPq) (project 520053/1998-2). We are grateful to all the ministries and agencies from the Government of Spain that supported the collection, compilation and coordination of forest inventory data, also including the Spanish Forest Inventories. S.d.M. was supported by the Serra Húnter fellowship provided by the Government of Catalonia (Generalitat de Catalunya). C. Ammer and P. Schall thank the Deutsche Forschungsgemeinschaft (DFG) Priority Program 1374 Biodiversity Exploratories. We acknowledge the use of data drawn from the Natural Forest plot data collected between January 2009 and March 2014 by the LUCAS programme for the New Zealand Ministry for the Environment. Data were sourced through the NZ National Vegetation Survey (NVS) Databank. Data from T.R.F. was supported by NERC (NE/W001691/1, NE/N011570/1, NE/R017980/1).

## Funding

Open access funding provided by Swiss Federal Institute of Technology Zurich.

## Author information

Author notes

1. These authors contributed equally: Lidong Mo, Constantin M. Zohner

## Authors and Affiliations

1. Institute of Integrative Biology, ETH Zurich (Swiss Federal Institute of Technology), Zurich, Switzerland  
Lidong Mo, Constantin M. Zohner, Johan van den Hoogen, Leila Mirzaghali, Haozhi Ma, Colin Averill, Iris Hordijk, Chelsea Chisholm & Thomas W. Crowther
2. Department of Forest Resources, University of Minnesota, St. Paul, MN, USA  
Peter B. Reich
3. Hawkesbury Institute for the Environment, Western Sydney University, Penrith, New South Wales, Australia  
Peter B. Reich
4. Institute for Global Change Biology, University of Michigan, Ann Arbor, MI, USA  
Peter B. Reich
5. Department of Forestry and Natural Resources, Purdue University, West Lafayette, IN, USA  
Jingjing Liang, Minjee Park & Mo Zhou
6. Department of Agricultural and Forest Sciences and Engineering, University of Lleida, Lleida, Spain  
Sergio de Miguel
7. Joint Research Unit CTFC - AGROTECNIO - CERCA, Solsona, Spain  
Sergio de Miguel
8. Wageningen University & Research, Wageningen, The Netherlands  
Gert-Jan Nabuurs, Arnan Araza, Frans Bongers, Mathieu Decuyper, Geerten Hengeveld & Mart-Jan Schelhaas
9. Department of Biology, Washington University, St. Louis, MO, USA  
Susanne S. Renner
10. Remote Sensing and Geoinformatics Section, Helmholtz GFZ German Research Centre for Geosciences, Potsdam, Germany

- Martin Herold
11. School of Geography, University of Leeds, Leeds, UK  
Oliver L. Phillips, Timothy R. Baker & Roel Brienen
  12. Forestry Division, Food and Agriculture Organization of the United Nations, Rome, Italy  
Javier G. P. Gamarra
  13. Central IT - Teaching and Research, University of Zürich, Zürich, Switzerland  
Devin Routh
  14. Swiss Federal Institute for Forest, Snow and Landscape Research WSL, Birmensdorf, Switzerland  
Meinrad Abegg
  15. UFR Biosciences, University Félix Houphouët-Boigny, Abidjan, Côte d'Ivoire  
Yves C. Adou Yao
  16. Department of Agricultural, Food, Environmental and Animal Sciences, University of Udine, Udine, Italy  
Giorgio Alberti
  17. National Biodiversity Future Center (NBFC), Palermo, Italy  
Giorgio Alberti
  18. Spatial Ecology and Conservation Lab, Center for Latin American Studies, University of Florida, Gainesville, FL, USA  
Angelica M. Almeyda Zambrano & Eben N. Broadbent
  19. Forestry School, Tecnológico de Costa Rica TEC, Cartago, Costa Rica  
Braulio Vilchez Alvarado & Edgar Ortiz-Malavasi
  20. Fundacion ConVida, Universidad Nacional Abierta y a Distancia, UNAD, Medellín, Colombia  
Esteban Alvarez-Dávila
  21. Field Museum of Natural History, Chicago, IL, USA  
Patricia Alvarez-Loayza & Nigel C. A. Pitman
  22. Center for Tropical Research, Institute of the Environment and Sustainability, University of California, Los Angeles (UCLA), Los Angeles, CA, USA  
Luciana F. Alves
  23. National Institute of Amazonian Research, Manaus, Brazil  
Iêda Amaral
  24. Silviculture and Forest Ecology of the Temperate Zones, University of Göttingen, Göttingen, Germany  
Christian Ammer & Peter Schall
  25. Division of Forest and Forest Resources, Norwegian Institute of Bioeconomy Research (NIBIO), Ås, Norway  
Clara Antón-Fernández
  26. Museo de Historia Natural Noel Kempff Mercado, Santa Cruz de la Sierra, Bolivia  
Alejandro Araujo-Murakami, Luzmila Arroyo, Timothy J. Killeen & Alexander Parada-Gutierrez
  27. Joint Research Centre, European Commission, Ispra, Italy  
Valerio Avitabile
  28. Programa de Ciencias del Agro y el Mar, Herbario Universitario (PORT), UNELLEZ-Guanare, Portuguesa, Venezuela  
Gerardo A. Aymard
  29. Compensation International Progress S. A. Ciprogress Greenlife, Bogotá, Colombia  
Gerardo A. Aymard & Krzysztof J. Stereńczak
  30. Department of Geomatics, Forest Research Institute, Sękocin Stary, Poland  
Radomir Bałazy
  31. Naturalis Biodiversity Center, Leiden, The Netherlands  
Olaf Banki & Hans ter Steege
  32. Centro Multidisciplinar, Universidade Federal do Acre, Rio Branco, Brazil  
Jorcely G. Barroso
  33. Proceedings of the National Academy of Sciences, Washington, DC, USA  
Meredith L. Bastian
  34. Department of Evolutionary Anthropology, Duke University, Durham, NC, USA

- Meredith L. Bastian
35. TERRA Teaching and Research Centre, Gembloux Agro-Bio Tech, University of Liege, Liege, Belgium  
Jean-Francois Bastin
  36. Forestry Consultant, Grosseto, Italy  
Luca Birigazzi
  37. Institut Agronomique néo-Calédonien (IAC), Nouméa, New Caledonia  
Philippe Birnbaum
  38. AMAP, Univ. Montpellier, Montpellier, France  
Philippe Birnbaum
  39. CIRAD, CNRS, INRAE, IRD, Montpellier, France  
Philippe Birnbaum
  40. Institute of Tropical Forest Conservation, Mbarara University of Science & Technology, Mbarara, Uganda  
Robert Bitariho
  41. Isotope Bioscience Laboratory - ISOFYS, Ghent University, Ghent, Belgium  
Pascal Boeckx
  42. Ștefan cel Mare University of Suceava, Suceava, Romania  
Olivier Bouriaud
  43. Department of Forest Sciences, Luiz de Queiroz College of Agriculture, University of São Paulo, Piracicaba, Brazil  
Pedro H. S. Brancalion, Ricardo G. César & Vanessa S. Moreno
  44. Bavarian State Institute of Forestry, Freising, Germany  
Susanne Brandl
  45. Department of Natural Sciences, Manchester Metropolitan University, Manchester, UK  
Francis Q. Brearley
  46. Institute of Biology/Geobotany and Botanical Garden, Martin Luther University Halle-Wittenberg, Halle-Wittenberg, Germany  
Helge Bruelheide
  47. German Centre for Integrative Biodiversity Research (iDiv) Halle-Jena-Leipzig, Leipzig, Germany  
Helge Bruelheide
  48. Department of Agriculture, Food, Environment and Forest (DAGRI), University of Firenze, Florence, Italy  
Filippo Bussotti
  49. Department of Biological, Geological, and Environmental Sciences, University of Bologna, Bologna, Italy  
Roberto Cazzolla Gatti
  50. Department of Spatial Regulation, GIS and Forest Policy, Institute of Forestry, Belgrade, Serbia  
Goran Cesljar
  51. Department of Ecology and Evolutionary Biology, University of Connecticut, Storrs, CT, USA  
Robin L. Chazdon & Cory Merow
  52. Tropical Forests and People Research Centre, University of the Sunshine Coast, Sippy Downs, Queensland, Australia  
Robin L. Chazdon
  53. Faculty of Natural Resources Management, Lakehead University, Thunder Bay, Ontario, Canada  
Han Y. H. Chen
  54. Division of Forest Resources Information, Korea Forest Promotion Institute, Seoul, South Korea  
Hyunkook Cho & Ilbin Jung
  55. IFER - Institute of Forest Ecosystem Research, Jilove u Prahy, Czech Republic  
Emil Cienciala
  56. Global Change Research Institute CAS, Brno, Czech Republic  
Emil Cienciala & John R. Poulsen
  57. Nicholas School of the Environment, Duke University, Durham, NC, USA

- Connie Clark
58. Department of Biology, University of Missouri–St. Louis, St. Louis, MO, USA  
David Clark
59. Programa de Pós-graduação em Biologia Vegetal, Instituto de Biologia, Universidade Estadual de Campinas, Campinas, Brazil  
Gabriel D. Colletta
60. Conservation Research Institute, Department of Plant Sciences, University of Cambridge, Cambridge, UK  
David A. Coomes
61. Andes to Amazon Biodiversity Program, Madre de Dios, Peru  
Fernando Cornejo Valverde
62. Facultad de Ciencias Forestales y Ambientales, Universidad Juárez del Estado de Durango, Durango, Mexico  
José J. Corral-Rivas
63. Department of Biology, West Virginia University, Morgantown, WV, USA  
Philip M. Crim & Jonathan R. Cumming
64. Department of Physical and Biological Sciences, The College of Saint Rose, Albany, NY, USA  
Philip M. Crim
65. Biology Department, Centre for Structural and Functional Genomics, Concordia University, Montreal, Quebec, Canada  
Selvadurai Dayanandan
66. Natural Science Department, Universidade Regional de Blumenau, Blumenau, Brazil  
André L. de Gasper & Alexander C. Vibrans
67. Cirad, UMR EcoFoG (AgroParisTech, CNRS, INRAE, Université des Antilles, Université de la Guyane), Campus Agronomique, Kourou, French Guiana  
Géraldine Derroire & Aurélie Dourdain
68. Department of Geography, Environment and Geomatics, University of Guelph, Guelph, Ontario, Canada  
Ben DeVries
69. Institute of Forestry, Belgrade, Serbia  
Ilija Djordjevic & Radovan V. Nevenic
70. Institute of Botany, The Czech Academy of Sciences, Třeboň, Czech Republic  
Jiri Dolezal
71. Department of Botany, Faculty of Science, University of South Bohemia, České Budějovice, Czech Republic  
Jiri Dolezal
72. IRET, Herbar National du Gabon (CENAREST), Libreville, Gabon  
Nestor Laurier Engone Obiang
73. Department of Ecology and Evolutionary Biology, University of Arizona, Tucson, AZ, USA  
Brian J. Enquist & Brian S. Maitner
74. The Santa Fe Institute, Santa Fe, NM, USA  
Brian J. Enquist
75. Department of Environment and Science, Queensland Herbarium and Biodiversity Science, Toowong, Queensland, Australia  
Teresa J. Eyre, Victor J. Neldner & Michael R. Ngugi
76. Ecole de Foresterie et Ingénierie du Bois, Université Nationale d'Agriculture, Kétou, Benin  
Adandé Belarmain Fandohan
77. School of Biological and Behavioural Sciences, Queen Mary University of London, London, UK  
Tom M. Fayle
78. Biology Centre of the Czech Academy of Sciences, Institute of Entomology, České Budějovice, Czech Republic  
Tom M. Fayle
79. Geography, Faculty of Environment, Science and Economy, University of Exeter, Exeter, UK  
Ted R. Feldpausch

80. Museu Paraense Emílio Goeldi, Coordenação de Ciências da Terra e Ecologia, Belém, Brazil  
Leandro V. Ferreira
81. Natural Resources Institute Finland (Luke), Joensuu, Finland  
Leena Finér
82. Institute of Plant Sciences, University of Bern, Bern, Switzerland  
Markus Fischer
83. Forest Research Institute Malaysia, Kuala Lumpur, Malaysia  
Christine Fletcher
84. Research and Innovation Centre, Fondazione Edmund Mach, San Michele All'adige, Italy  
Lorenzo Frizzera, Damiano Gianelle & Mirco Rodeghiero
85. Glick Designs LLC, Hadley, MA, USA  
Henry B. Glick
86. Royal Botanic Garden Edinburgh, Edinburgh, UK  
David J. Harris & Axel Dalberg Poulsen
87. Department of Biology, University of Oxford, Oxford, UK  
Andrew Hector
88. Department of Plant Systematics, University of Bayreuth, Bayreuth, Germany  
Andreas Hemp
89. Cirad, UPR Forêts et Sociétés, University of Montpellier, Montpellier, France  
Bruno Héroult & Plinio Sist
90. Department of Forestry and Environment, National Polytechnic Institute (INP-HB),  
Yamoussoukro, Côte d'Ivoire  
Bruno Héroult & Irie C. Zo-Bi
91. Forest Research Institute, University of the Sunshine Coast, Sippy Downs, Queensland, Australia  
John L. Herbohn, Andrew R. Marshall & Sharif A. Mukul
92. Centre for Conservation Science, The Royal Society for the Protection of Birds, Sandy, UK  
Annika Hillers
93. Wild Chimpanzee Foundation, Liberia Office, Monrovia, Liberia  
Annika Hillers
94. Instituto de Investigaciones de la Amazonía Peruana, Iquitos, Peru  
Eurídice N. Honorio Coronado
95. Centre for Invasion Biology, Department of Mathematical Sciences, Stellenbosch University,  
Stellenbosch, South Africa  
Cang Hui
96. Theoretical Ecology Unit, African Institute for Mathematical Sciences, Cape Town, South Africa  
Cang Hui
97. AMAP, Univ. Montpellier, CIRAD, CNRS, INRAE, IRD, Montpellier, France  
Thomas Ibanez
98. Department of Forest Science, Tokyo University of Agriculture, Tokyo, Japan  
Nobuo Imai
99. Institute of Dendrology, Polish Academy of Sciences, Kórnik, Poland  
Andrzej M. Jagodziński & Jacek Oleksyn
100. Department of Game Management and Forest Protection, Poznań University of Life  
Sciences, Poznań, Poland  
Andrzej M. Jagodziński
101. Faculty of Biology, Białowieża Geobotanical Station, University of Warsaw, Białowieża,  
Poland  
Bogdan Jaroszewicz
102. Department of Geosciences and Natural Resource Management, University of  
Copenhagen, Copenhagen, Denmark  
Vivian Kvist Johannsen & Sebastian Kepfer-Rojas
103. Department of Plant Biology, Institute of Biology, University of Campinas, UNICAMP,  
Campinas, Brazil  
Carlos A. Joly

104. School of Biological Sciences, University of Bristol, Bristol, UK  
Tommaso Jucker
105. Forestry Faculty, Mytischki Branch of Bauman Moscow State Technical University,  
Mytischki, Russian Federation  
Viktor Karminov & Petr Ontikov
106. Negaunee Integrative Research Center, Field Museum of Natural History, Chicago, IL,  
USA  
Kuswata Kartawinata
107. CAVElab - Computational & Applied Vegetation Ecology, Department of Environment,  
Ghent University, Ghent, Belgium  
Elizabeth Kearsley & Hans Verbeeck
108. CTFS-ForestGEO, Smithsonian Tropical Research Institute, Balboa, Panama  
David Kenfack
109. Department of Physical and Environmental Sciences, Colorado Mesa University, Grand  
Junction, CO, USA  
Deborah K. Kennard
110. UniSA STEM and Future Industries Institute, University of South Australia, Adelaide,  
South Australia, Australia  
Gunnar Keppel
111. Department of Botany, Dr. Harisingh Gour Vishwavidyalaya (A Central University),  
Sagar, India  
Mohammed Latif Khan
112. Department of Agriculture, Forestry and Bioresources, Seoul National University, Seoul,  
South Korea  
Hyun Seok Kim & Minjee Park
113. Interdisciplinary Program in Agricultural and Forest Meteorology, Seoul National  
University, Seoul, South Korea  
Hyun Seok Kim
114. National Center for Agro Meteorology, Seoul, South Korea  
Hyun Seok Kim
115. Research Institute for Agriculture and Life Sciences, Seoul National University, Seoul,  
South Korea  
Hyun Seok Kim
116. Graduate School of Agriculture, Kyoto University, Kyoto, Japan  
Kanehiro Kitayama
117. Institute for World Forestry, University of Hamburg, Hamburg, Germany  
Michael Köhl & Philip Mundhenk
118. Institute of Forestry and Engineering, Estonian University of Life Sciences, Tartu, Estonia  
Henn Korjus, Diana Laarmann & Mait Lang
119. Biodiversity and Natural Resources Program, International Institute for Applied Systems  
Analysis, Laxenburg, Austria  
Florian Kraxner, Dmitry Schepaschenko & Anatoly Z. Shvidenko
120. Peoples' Friendship University of Russia (RUDN University), Moscow, Russian  
Federation  
Dmitry Kucher
121. Faculty of Forestry, Qingdao Agricultural University, Qingdao, China  
Huicui Lu
122. Center for Forest Ecology and Productivity, Russian Academy of Sciences, Moscow,  
Russian Federation  
Natalia V. Lukina & Elena Tikhonova
123. Environmental Change Institute, School of Geography and the Environment, University of  
Oxford, Oxford, UK  
Yadvinder Malhi



124. AgroParisTech, UMR-AMAP, Cirad, CNRS, INRA, IRD, Université de Montpellier, Montpellier, France  
Eric Marcon
125. Departamento de Ciências Biológicas, Universidade do Estado de Mato Grosso, Nova Xavantina, Brazil  
Beatriz Schwantes Marimon & Ben Hur Marimon-Junior
126. Department of Environment and Geography, University of York, York, UK  
Andrew R. Marshall
127. Flamingo Land Ltd., Kirby Misperton, UK  
Andrew R. Marshall
128. Department of Wildlife Management, College of African Wildlife Management, Mweka, Tanzania  
Emanuel H. Martin
129. Departamento de Ecología y Recursos Naturales, Facultad de Ciencias, Universidad Nacional Autónoma de México, Mexico City, Mexico  
Jorge A. Meave
130. Universidad del Tolima, Ibagué, Colombia  
Omar Melo-Cruz
131. Colegio de Profesionales Forestales de Cochabamba, Cochabamba, Bolivia  
Casimiro Mendoza
132. Jardín Botánico de Medellín, Medellín, Colombia  
Irina Mendoza-Polo
133. Department of Forest Management, Dendrometry and Forest Economics, Warsaw University of Life Sciences, Warsaw, Poland  
Stanislaw Miscicki
134. Jardín Botánico de Missouri, Oxapampa, Peru  
Abel Monteagudo Mendoza & Rodolfo M. Vasquez
135. Universidad Nacional de San Antonio Abad del Cusco, Cusco, Peru  
Abel Monteagudo Mendoza
136. Department of Environment and Development Studies, United International University, Dhaka, Bangladesh  
Sharif A. Mukul
137. Instituto de Silvicultura e Industria de la Madera, Universidad Juárez del Estado de Durango, Durango, Mexico  
María Guadalupe Nava-Miranda
138. Programa de Doctorado en Ingeniería para el Desarrollo Rural y Civil, Escuela de Doctorado Internacional de la Universidad de Santiago de Compostela (EDIUS), Santiago de Compostela, Spain  
María Guadalupe Nava-Miranda
139. Universidad Estatal Amazónica, Puyo, Ecuador  
David Neill
140. Department of Evolutionary Biology and Environmental Studies, University of Zürich, Zürich, Switzerland  
Pascal A. Niklaus
141. Climate, Fire, and Carbon Cycle Sciences, USDA Forest Service, Durham, NH, USA  
Yude Pan
142. Centre for Forest Research, Université du Québec à Montréal, Montréal, Quebec, Canada  
Alain Paquette & Eric B. Searle
143. V. N. Sukachev Institute of Forest, FRC KSC, Siberian Branch of the Russian Academy of Sciences, Krasnoyarsk, Russian Federation  
Elena I. Parfenova & Nadja Tchebakova
144. Forest Ecology and Forest Management Group, Wageningen University & Research, Wageningen, The Netherlands  
Marc Parren & Douglas Sheil

145. Department of Ecology and Environmental Sciences, Pondicherry University, Puducherry, India  
Narayanaswamy Parthasarathy
146. Instituto Nacional de Tecnología Agropecuaria (INTA), Universidad Nacional de la Patagonia Austral (UNPA), Consejo Nacional de Investigaciones Científicas y Técnicas (CONICET), Río Gallegos, Argentina  
Pablo L. Peri
147. School of Social Sciences (Urban Studies), Western Sydney University, Penrith, New South Wales, Australia  
Sebastian Pfautsch
148. GIP Ecofor, Paris, France  
Nicolas Picard
149. Instituto Nacional de Pesquisas da Amazônia, Manaus, Brazil  
Maria Teresa F. Piedade, Jochen Schöngart & Natalia Targhetta
150. Laboratório de Dendrologia e Silvicultura Tropical, Centro de Formação em Ciências Agroflorestais, Universidade Federal do Sul da Bahia, Itabuna, Brazil  
Daniel Piotto & Samir G. Rolim
151. The Nature Conservancy, Boulder, CO, USA  
John R. Poulsen
152. Chair of Forest Growth and Yield Science, Department of Life Science Systems, TUM School of Life Sciences, Technical University of Munich, Freising, Germany  
Hans Pretzsch
153. Sustainable Forest Management Research Institute (iuFOR), University Valladolid, Valladolid, Spain  
Hans Pretzsch
154. Universidad Nacional de la Amazonía Peruana, Iquitos, Peru  
Freddy Ramirez Arevalo
155. Servicios Ecosistémicos y Cambio Climático (SECC), Fundación Con Vida & Corporación COL-TREE, Medellín, Colombia  
Zorayda Restrepo-Correa
156. Centro Agricultura, Alimenti, Ambiente, University of Trento, San Michele All'adige, Italy  
Mirco Rodeghiero
157. Center for Natural Climate Solutions, Conservation International, Arlington, VA, USA  
Anand Roopsind
158. Department of Biology, University of Florence, Florence, Italy  
Francesco Rovero
159. Tropical Biodiversity Section, MUSE - Museo delle Scienze, Trento, Italy  
Francesco Rovero
160. Info Flora, Geneva, Switzerland  
Ervan Rutishauser
161. Department of Environmental Sciences, Central University of Jharkhand, Ranchi, India  
Purabi Saikia
162. Vicerrectoría de Investigación y Postgrado, Universidad de La Frontera, Temuco, Chile  
Christian Salas-Eljatib
163. Departamento de Gestión Forestal y su Medio Ambiente, Universidad de Chile, Santiago, Chile  
Christian Salas-Eljatib
164. Rhino and Forest Fund e.V., Kehl, Germany  
Philippe Saner
165. Siberian Federal University, Krasnoyarsk, Russian Federation  
Dmitry Schepaschenko
166. Geobotany, Faculty of Biology, University of Freiburg, Freiburg im Breisgau, Germany  
Michael Scherer-Lorenzen

167. Remote Sensing Laboratories, Department of Geography, University of Zürich, Zürich, Switzerland  
Bernhard Schmid
168. National Forest Centre, Forest Research Institute Zvolen, Zvolen, Slovakia  
Vladimír Seben
169. Université de Lorraine, AgroParisTech, INRAE, Silva, Nancy, France  
Josep M. Serra-Diaz
170. Center for Biodiversity Dynamics in a Changing World (BIOCHANGE), Department of Biology, Aarhus University, Aarhus, Denmark  
Josep M. Serra-Diaz
171. Faculty of Environmental Sciences and Natural Resource Management, Norwegian University of Life Sciences, Ås, Norway  
Douglas Sheil
172. Departamento de Biología, Universidad de la Serena, La Serena, Chile  
Javier E. Silva-Espejo
173. Centro de Ciências Biológicas e da Natureza, Universidade Federal do Acre, Rio Branco, Brazil  
Marcos Silveira
174. Guyana Forestry Commission, Georgetown, French Guiana  
James Singh
175. Environmental and Life Sciences, Faculty of Science, Universiti Brunei Darussalam, Gadong, Brunei Darussalam  
Ferry Slik
176. Plant Systematic and Ecology Laboratory, Department of Biology, Higher Teachers' Training College, University of Yaoundé I, Yaoundé, Cameroon  
Bonaventure Sonké
177. Departamento de Ecologia, Universidade Federal do Rio Grande do Norte, Natal, Brazil  
Alexandre F. Souza
178. Center for Ecological Dynamics in a Novel Biosphere (ECONOVO) & Center for Biodiversity Dynamics in a Changing World (BIOCHANGE), Department of Biology, Aarhus University, Aarhus, Denmark  
Jens-Christian Svenning
179. Section for Ecoinformatics and Biodiversity, Department of Biology, Aarhus University, Aarhus, Denmark  
Jens-Christian Svenning
180. Faculty of Forestry and Wood Sciences, Czech University of Life Sciences, Prague, Czech Republic  
Miroslav Svoboda
181. Wildlife Conservation Society, New York, NY, USA  
Ben Swanepoel
182. Quantitative Biodiversity Dynamics, Department of Biology, Utrecht University, Utrecht, The Netherlands  
Hans ter Steege
183. Iwokrama International Centre for Rainforest Conservation and Development (IIC), Georgetown, French Guiana  
Raquel Thomas
184. School of Forestry and Environmental Studies, Yale University, New Haven, CT, USA  
Peter M. Umunay
185. Botanical Garden of Ural Branch of Russian Academy of Sciences, Ural State Forest Engineering University, Yekaterinburg, Russian Federation  
Vladimir A. Usoltsev
186. Pontificia Universidad Católica del Ecuador, Quito, Ecuador  
Renato Valencia
187. LINCGlobal, Museo Nacional de Ciencias Naturales, CSIC, Madrid, Spain

- Fernando Valladares
188. Plant Ecology and Nature Conservation Group, Wageningen University, Wageningen, The Netherlands  
Fons van der Plas
189. Silviculture Research Institute, Vietnamese Academy of Forest Sciences, Hanoi, Vietnam  
Tran Van Do
190. Department of Biology, Stanford University, Stanford, CA, USA  
Michael E. van Nuland
191. Centre for the Research and Technology of Agro-Environmental and Biological Sciences, CITAB, UTAD, Quinta de Prados, Vila Real, Portugal  
Helder Viana
192. Agricultural High School, Polytechnic Institute of Viseu, IPV, Viseu, Portugal  
Helder Viana
193. Department of Forest Engineering, Universidade Regional de Blumenau, Blumenau, Brazil  
Alexander C. Vibrans
194. Environmental Studies and Research Center, University of Campinas, UNICAMP, Campinas, Brazil  
Simone Vieira
195. Department of Forest and Wood Science, Stellenbosch University, Stellenbosch, South Africa  
Klaus von Gadow
196. Key Laboratory of Tropical Biological Resources, Ministry of Education, School of Life and Pharmaceutical Sciences, Hainan University, Haikou, China  
Hua-Feng Wang & Zhi-Xin Zhu
197. Division of Forestry and Natural Resources, West Virginia University, Morgantown, WV, USA  
James V. Watson
198. Department of Zoology, University of Oxford, Oxford, UK  
Gijsbert D. A. Werner
199. Manaaki Whenua – Landcare Research, Lincoln, New Zealand  
Susan K. Wiser
200. Department of Wetland Ecology, Institute of Geography and Geoecology, Karlsruhe Institute for Technology, Karlsruhe, Germany  
Florian Wittmann
201. Independent Researcher, Bad Aussee, Austria  
Hannsjoerg Woell
202. Centre for Agricultural Research in Suriname (CELOS), Paramaribo, Suriname  
Verginia Wortel
203. Tropenbos International, Wageningen, The Netherlands  
Roderik Zagt
204. Polish State Forests, Coordination Center for Environmental Projects, Warsaw, Poland  
Tomasz Zawila-Niedzwiecki
205. Research Center of Forest Management Engineering of State Forestry and Grassland Administration, Beijing Forestry University, Beijing, China  
Chunyu Zhang & Xiuhai Zhao
206. Society for Ecological Restoration (SER), Washington, DC, USA  
George D. Gann

## Contributions

L. Mo, C.M.Z. and T.W.C. conceived, developed and wrote the paper. L. Mo and C.M.Z. performed the analyses, with assistance from J.v.d.H., L. Mirzaghali, D.R., A.A. and M.H. S.S.R., P.B.R., J.L., S.d.M., M.H., C. Averill, O.L.P., J.G.P.G. and G.-J.N. provided conceptual and/or editorial input to improve the manuscript. I.H., M.A., Y.C.A.Y., G.A., A.M.A.Z., B.V.A., E.A.-D., P.A.-L., L.F.A., I.A., C. Ammer,

C.A.-F., A.A., L.A., V.A., G.A.A., T.R.B., R. Bałazy, O. Banki, J.G.B., M.L.B., J.-F.B., L.B., P. Birnbaum, R. Bitariho, P. Boeckx, F. Bongers, O. Bouriaud, P.H.S.B., S.B., F.Q.B., R. Brienen, E.N.B., H.B., F. Bussotti, R.C.G., R.G.C., G.C., R.L.C., H.Y.C.C., C. Chisholm, H.C., E.C., C. Clark, D.C., G.D.C., D.A.C., F.C.V., J.J.C.-R., P.M.C., J.R.C., S.D., A.L.d.G., M.D., G.D., B.D., I.D., J.D., A.D., N.L.E.O., B.J.E., T.J.E., A.B.F., T.M.F., T.R.F., L.V.F., L. Finér, M.F., C.F., L. Frizzera, D.G., H.B.G., D.J.H., A. Hector, A. Hemp, G.H., B.H., J.L.H., A. Hillers, E.N.H.C., C.H., T.I., N.I., A.M.J., B.J., V.K.J., C.A.J., T.J., I.J., V.K., K. Kartawinata, E.K., D. Kenfack, D.K.K., S.K.-R., G.K., M.L.K., T.J.K., H.S.K., K. Kitayama, M.K., H.K., F.K., D. Kucher, D.L., M.L., H.L., N.V.L., B.S. Maitner, Y.M., E.M., B.S. Marimon, B.H.M.-J., A.R.M., E.H.M., J.A.M., O.M.-C., C. Mendoza, I.M.-P., S.M., C. Merow, A.M.M., V.S.M., S.A.M., P.M., M.G.N.-M., D.N., V.J.N., R.V.N., M.R.N., P.A.N., J.O., P.O., E.O.-M., Y.P., A.P., A.P.-G., E.I.P., M. Park, M. Parren, N. Parthasarathy, P.L.P., S.P., N. Picard, M.T.F.P., D.P., N.C.A.P., A.D.P., J.R.P., H.P., F.R.A., Z.R.-C., M.R., S.G.R., A.R., F.R., E.R., P. Saikia, C.S.-E., P. Saner, P. Schall, M.-J.S., D. Schepaschenko, M.S.-L., B. Schmid, J. Schöngart, E.B.S., V.S., J.M.S.-D., D. Sheil, A.Z.S., J.E.S.-E., M. Silveira, J. Singh, P. Sist, F.S., B. Sonké, A.F.S., K.J.S., J.-C.S., M. Svoboda, B. Swanepoel, N. Targhetta, N. Tchebakova, H.t.S., R.T., E.T., P.M.U., V.A.U., R.V., F.V., F.v.d.P., T.V.D., M.E.v.N., R.M.V., H. Verbeek, H. Viana, A.C.V., S.V., K.v.G., H.-F.W., J.V.W., G.D.A.W., S.K.W., F.W., H.W., V.W., R.Z., T.Z.-N., C.Z., X.Z., M.Z., Z.-X.Z. and I.C.Z.-B. provided data for the analysis. All authors reviewed and approved the manuscript.

## Corresponding authors

Correspondence to [Lidong Mo](#), [Constantin M. Zohner](#) or [Thomas W. Crowther](#).

## Ethics declarations

### Competing interests

The authors declare the following competing interests: T.W.C. serves as the chair of the UN Decade on Ecosystem Restoration, the chair of Restor.eco and he is an advisor to 1T.org. All are unpaid positions that aim to promote the equitable conservation and restoration of nature. R.L.C. is an advisor to 1T.org. J.-C.S. serves pro bono in the supervisory board for Rewilding Europe (non-governmental organisation), which is operating several interconnected initiatives to help make Europe a wilder place. P.H.S.B. is partner at Re.green, a company dedicated to restoring native ecosystems. S.A.M. at present serves as the executive director of BioCarbon International, a global think tank dedicated to achieving carbon neutrality through nature-based solutions. The position S.A.M. holds is voluntary and has no relation with the findings of the study.

## Peer review

### Peer review information

*Nature* thanks the anonymous reviewers for their contribution to the peer review of this work.

## Additional information

**Publisher's note** Springer Nature remains neutral with regard to jurisdictional claims in published maps and institutional affiliations.

## Supplementary information

[Supplementary Information](#)

## Rights and permissions

**Open Access** This article is licensed under a Creative Commons Attribution 4.0 International License, which permits use, sharing, adaptation, distribution and reproduction in any medium or format, as long as you give appropriate credit to the original author(s) and the source, provide a link to the Creative Commons licence, and indicate if changes were made. The images or other third party material in this article are included in the article's Creative Commons licence, unless indicated otherwise in a credit line to the material. If material is not included in the article's Creative Commons licence and your intended use is not permitted by statutory regulation or exceeds the permitted use, you will need to obtain permission directly from the copyright holder. To view a copy of this licence, visit <http://creativecommons.org/licenses/by/4.0/>.

[Reprints and Permissions](#)

## About this article

### Cite this article

Mo, L., Zohner, C.M., Reich, P.B. *et al.* Integrated global assessment of the natural forest carbon potential. *Nature* (2023). <https://doi.org/10.1038/s41586-023-06723-z>

[Download citation](#)

- Received 15 July 2022
- Accepted 06 October 2023
- Published 13 November 2023
- DOI <https://doi.org/10.1038/s41586-023-06723-z>

### Share this article

Anyone you share the following link with will be able to read this content:

Provided by the Springer Nature SharedIt content-sharing initiative

### Subjects

- [Climate-change mitigation](#)
- [Forest ecology](#)
- [Restoration ecology](#)

## Comments

By submitting a comment you agree to abide by our [Terms](#) and [Community Guidelines](#). If you find something abusive or that does not comply with our terms or guidelines please flag it as inappropriate.

## [Download PDF](#)

- 
- • • [Abstract](#)
- [Main](#)
- [Mapping the human impact on tree biomass](#)
- [Comparison between models](#)
- [Total ecosystem carbon potential](#)
- [Carbon potential in existing forests](#)
- [Carbon potential in converted lands](#)
- [Comparison with previous estimates](#)
- [Discussion](#)
- [Methods](#)
- [Data availability](#)
- [References](#)
- [Acknowledgements](#)
- [Funding](#)
- [Author information](#)
- [Ethics declarations](#)
- [Peer review](#)
- [Additional information](#)
- [Supplementary information](#)
- [Rights and permissions](#)
- [About this article](#)
- [Comments](#)

Advertisement

Nature (*Nature*) ISSN 1476-4687 (online) ISSN 0028-0836 (print)

## **nature.com sitemap**

### **About Nature Portfolio**

- [About us](#)
- [Press releases](#)
- [Press office](#)
- [Contact us](#)

### **Discover content**

- [Journals A-Z](#)
- [Articles by subject](#)
- [Nano](#)
- [Protocol Exchange](#)
- [Nature Index](#)

### **Publishing policies**

- [Nature portfolio policies](#)
- [Open access](#)

## Author & Researcher services

- [Reprints & permissions](#)
- [Research data](#)
- [Language editing](#)
- [Scientific editing](#)
- [Nature Masterclasses](#)
- [Live Expert Trainer-led workshops](#)
- [Research Solutions](#)

## Libraries & institutions

- [Librarian service & tools](#)
- [Librarian portal](#)
- [Open research](#)
- [Recommend to library](#)

## Advertising & partnerships

- [Advertising](#)
- [Partnerships & Services](#)
- [Media kits](#)
- [Branded content](#)

## Career development

- [Nature Careers](#)
- [Nature Conferences](#)
- [Nature events](#)

## Regional websites

- [Nature Africa](#)
- [Nature China](#)
- [Nature India](#)
- [Nature Italy](#)
- [Nature Japan](#)
- [Nature Korea](#)
- [Nature Middle East](#)
- [Privacy Policy](#)
- [Use of cookies](#)
- [Legal notice](#)
- [Accessibility statement](#)
- [Terms & Conditions](#)
- [Your US state privacy rights](#)

© 2023 Springer Nature Limited

Sign up for the *Nature Briefing* newsletter — what matters in science, free to your inbox daily.

Email address

I agree my information will be processed in accordance with the *Nature* and Springer Nature Limited [Privacy Policy](#).